



shown with optional brick

The Aberdeen is a ranch design with some special touches such as a hearth area in the dinette, special ceilings in the dining room and master bedroom, and plenty of space in each room for today's living.

See a sales associate for pricing and complete inclusions

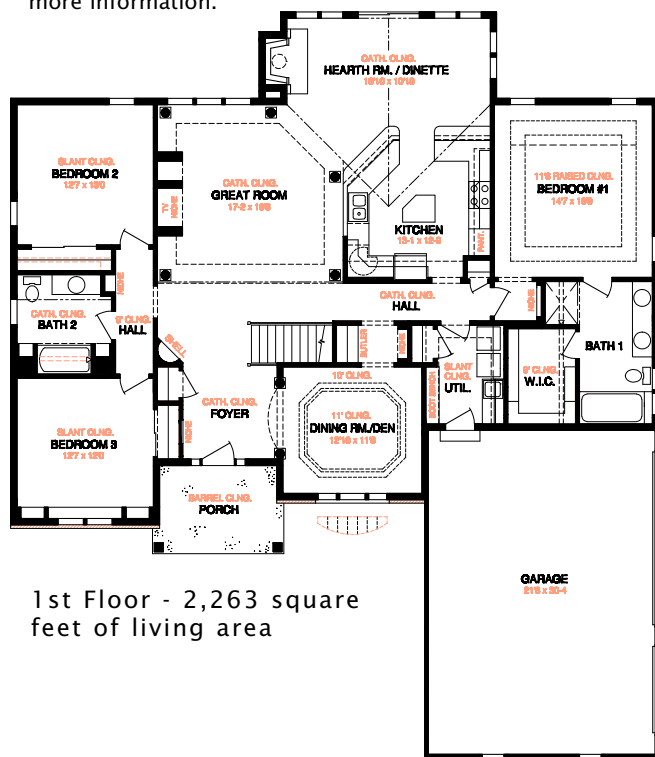
- GE® microwave & dishwasher (black, white or almond) ★Energy Star
- lighting, carpet, tile, hardware allowance
- Lindsay® Earthwise windows ★Energy Star
- Mansfield™, Aker™, and Kohler™, plumbing fixtures
- special ceilings in master bedroom, dining room, hearth room, dinette, kitchen, and greatroom
- Lennox® fireplace (per model)
- orange peel wall texture
- iron spindles at staircase
- 6-panel Masonite interior doors
- white painted 2 1/4" casing & 3 1/4" base
- painted walls throughout
- molded marble counters in all baths, laminate counters to remainder of home
- layered composite floors in kitchen, hearth, hall, dinette, foyer, utility room & all baths
- cabinet hardware
- prefinished cabinets in oak, maple, beech, birch, or thermafoil, all with hidden hinges
- 15-year TUFF-N-DRI® Foundation Waterproofing ★Energy Star
- Tyvek® Housewrap with OSB to exterior ★Energy Star
- 2x6 16" on center construction
- TJI Silent Floors
- 12-course basement
- garage door openers
- power vented water heater ★Energy Star
- built-in bookshelves in bedroom 3
- wire shelf & pole in closets
- built-in entertainment area
- Carrier® high efficiency furnace & air conditioner ★Energy Star
- OnQ® structured wiring
- 25-year asphalt shingles by Owens Corning®
- erosion control
- complete cleanup services

Green Built Home Certification is marked in *green*
Energy Star ratings are marked with ★Energy Star



Aberdeen I

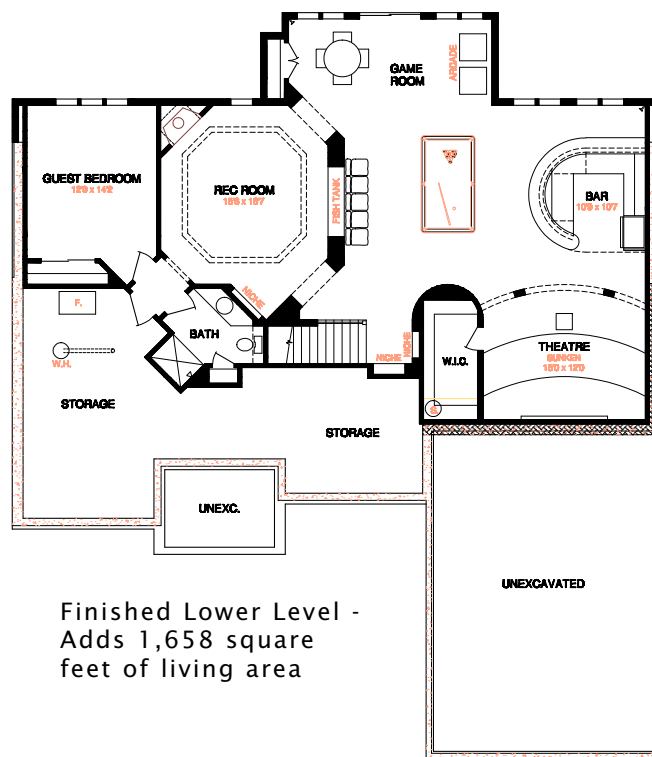
Westridge's seasoned sales staff will help design, customize and build your home. Customization is FREE and an essential part of designing everything you dream your new home should be. See a sales associate Saturdays and Sundays from 1-4 in the models for more information.



1st Floor - 2,263 square
feet of living area

Preferred Vendor Highlight

Westridge Builders uses the finest contractors in the area. You can research their products and services under the **PREFERRED VENDORS** menu on www.westridgebuilders.com



Finished Lower Level -
Adds 1,658 square
feet of living area

Photography, floorplans, inclusions and front elevations are representations of final product and are subject to change. Please refer to bid sheet for exact specifications. Dimensions and square footage are approximate and subject to change. Builder reserves the right to change specifications for purposes of improving product. Copyright Westridge Builders, Inc. All Rights Reserved. It is unlawful for anyone to use or copy these plans without the permission of Westridge Builders, Inc.



262-547-0326
N8 W22520 - L, Johnson Drive, Waukesha, WI 53186