



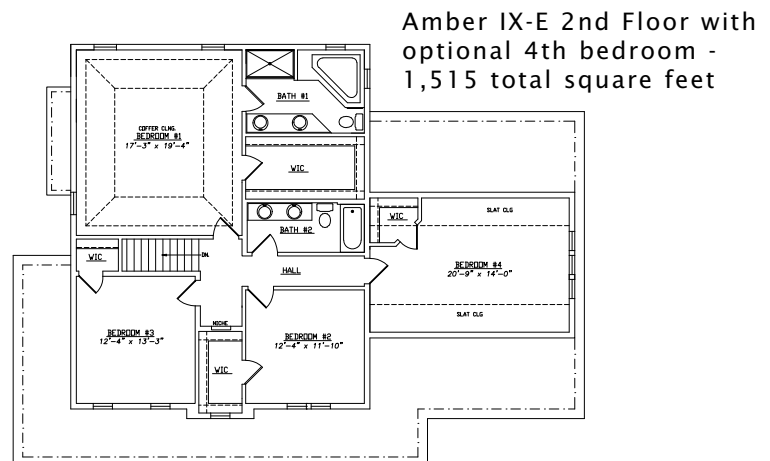
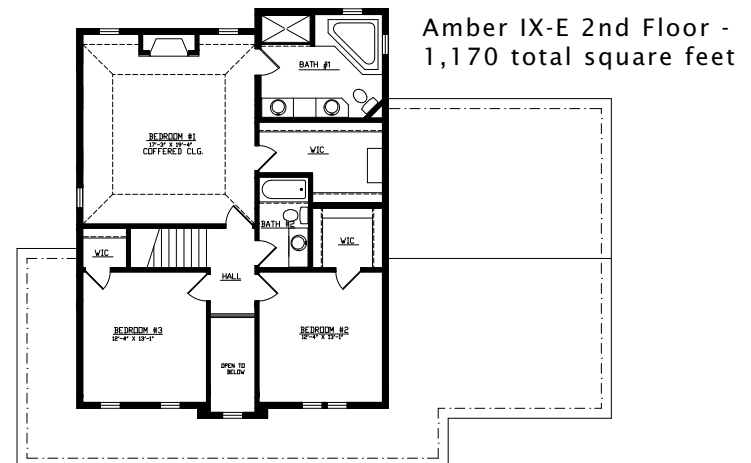
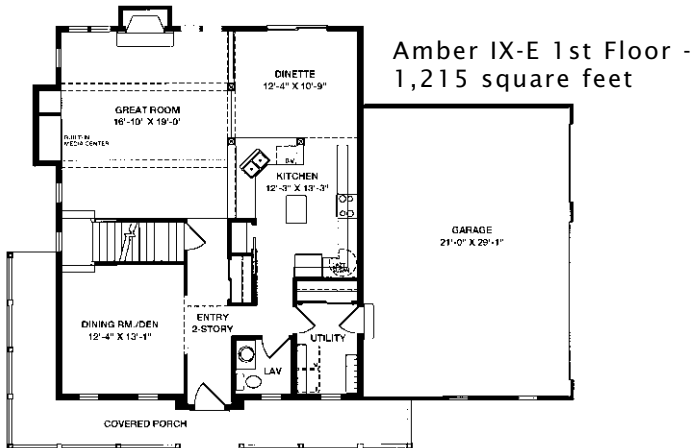
The Amber IX-E is one of those designs that doesn't waste one square foot! The built-in cabinets in the greatroom allows for a tv and stereo. Large arches throughout the first floor keep the space open. An eye-catching coffered ceiling is featured in the huge master bedroom.

See a sales associate for pricing and complete inclusions

- GE® microwave & dishwasher (black, white or almond) ★Energy Star
- lighting, carpet, tile, hardware allowance
- direct vent Lennox® fireplace ★Energy Star
- Lindsay® Earthwise windows ★Energy Star
- Mansfield™, Aker™, and Kohler™, plumbing fixtures
- orange peel wall texture
- cabinet hardware
- prefinished cabinets in oak, maple, beech, birch, or thermafoil, all with hidden hinges
- painted walls throughout
- 9' 1st floor walls
- 6-panel Masonite interior doors
- white painted 2 1/4" casing & 3 1/4" base
- molded marble counters in all baths, laminate counter-tops to remainder of home
- layered composite floors in kitchen, dinette, utility room, foyer & all baths
- wire shelf & pole in closets
- large covered front porch
- Carrier® high efficiency furnace & air conditioner ★Energy Star
- built-in entertainment area
- 15-year TUFF-N-DRI® Foundation Waterproofing ★Energy Star
- Tyvek® Housewrap with OSB to exterior ★Energy Star
- 2x6 16" on center construction
- TJI Silent Floors
- 12-course basement
- garage door openers
- power vented water heater ★Energy Star
- OnQ® structured wiring
- 25-year asphalt shingles by Owens Corning®
- erosion control
- complete cleanup services

Green Built Home Certification is marked in *green*
Energy Star ratings are marked with ★Energy Star

Westridge's seasoned sales staff will help design, customize and build your home. Customization is FREE and an essential part of designing everything you dream your new home should be. See a sales associate Saturdays & Sundays from 1-4 in the models for more information.

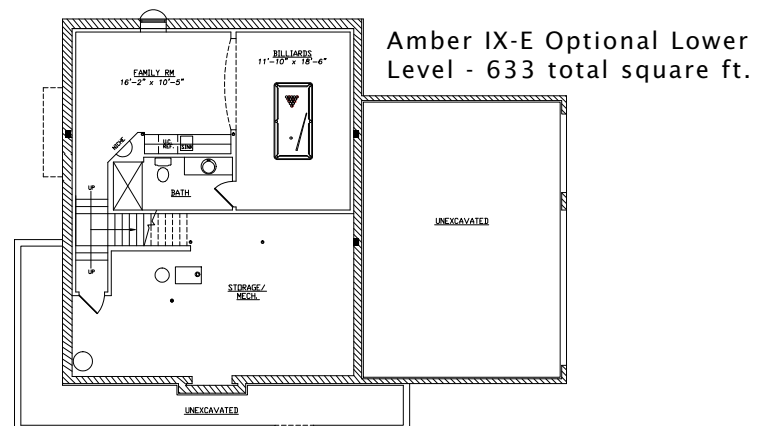


Preferred Vendor Highlight

Westridge Builders uses the finest contractors in the area. You can research their products and services under the **PREFERRED VENDORS** menu on www.westridgebuilders.com

NEU'S
Hardware Gallery

DAKOTA DRYWALL



Photography, floorplans, inclusions and front elevations are representations of final product and are subject to change. Please refer to bid sheet for exact specifications. Dimensions and square footage are approximate and subject to change. Builder reserves the right to change specifications for purposes of improving product. Copyright Westridge Builders, Inc. All Rights Reserved. It is unlawful for anyone to use or copy these plans without the permission of Westridge Builders, Inc.