



The Amber V is a classic 3-bedroom design from Westridge's Life line of homes. Ample space is given to the upstairs bedrooms which includes a huge master suite complete with specialty ceilings, options fireplace and spacious walk-in closet. The main floor has an open concept kitchen/greatroom and an extra room that can be used as a dining room or den.

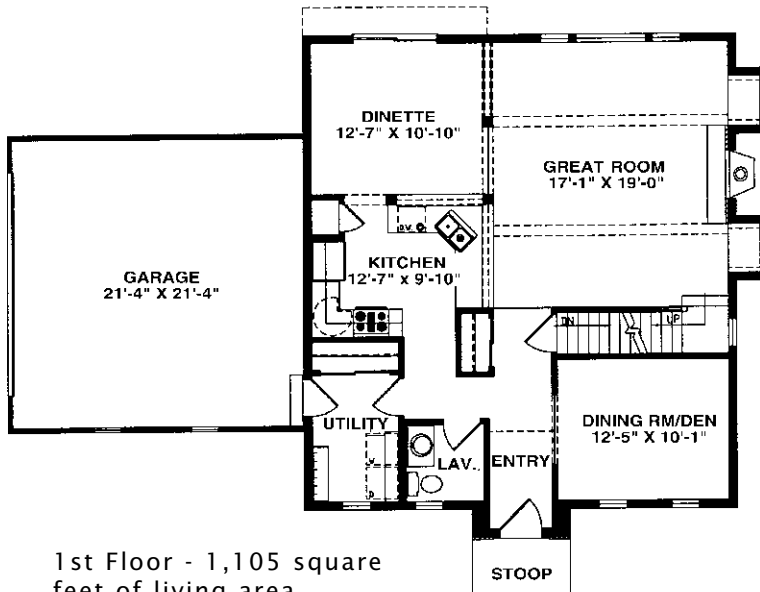
## See a sales associate for pricing and complete inclusions

- GE® microwave & dishwasher (black, white or almond) ★Energy Star
- lighting, carpet, tile, hardware allowance
- Lennox® fireplace (per model)
- Lindsay® Earthwise windows ★Energy Star
- Mansfield™, Aker™, and Kohler™, plumbing fixtures
- orange peel wall texture
- cabinet hardware
- prefinished cabinets in oak, maple, beech, birch, or thermafoil, all with hidden hinges
- painted walls throughout
- 6-panel Masonite interior doors
- white painted 2 1/4" casing & 3 1/4" base
- molded marble counters in all baths, laminate counter-tops to remainder of home
- layered composite floors in kitchen, dinette, utility room, foyer & all baths
- wire shelf & pole in closets
- Carrier® high efficiency furnace & air conditioner ★Energy Star
- OnQ® structured wiring
- 15-year TUFF-N-DRI® Foundation Waterproofing ★Energy Star
- Tyvek® Housewrap with OSB to exterior ★Energy Star
- 2x6 16" on center construction
- TJI Silent Floors
- 12-course basement
- garage door openers
- power vented water heater ★Energy Star
- 25-year asphalt shingles by Owens Corning®
- erosion control
- complete cleanup services

Green Built Home Certification is marked in *green*  
Energy Star ratings are marked with ★Energy Star



Westridge's seasoned sales staff will help design, customize and build your home. Customization is FREE and an essential part of designing everything you dream your new home should be. See a sales associate Saturdays and Sundays from 1-4 in the models for more information.

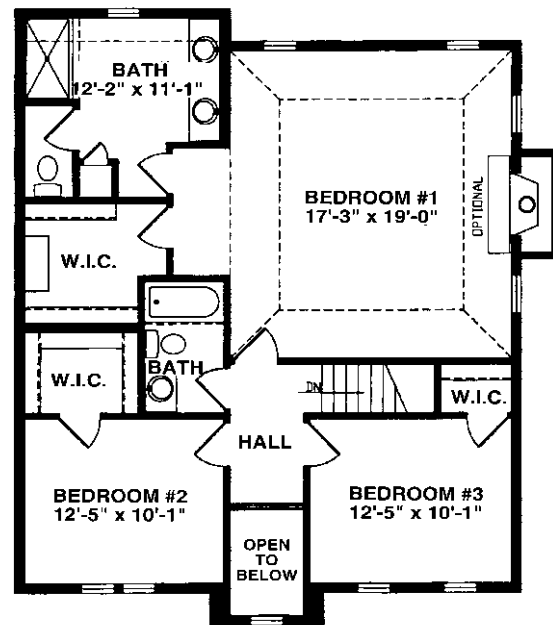


1st Floor - 1,105 square feet of living area

2nd Floor - 1,063 square feet of living area

## Preferred Vendor Highlight

Westridge Builders uses the finest contractors in the area. You can research their products and services under the **PREFERRED VENDORS** menu on [www.westridgebuilders.com](http://www.westridgebuilders.com)



Photography, floorplans, inclusions and front elevations are representations of final product and are subject to change. Please refer to bid sheet for exact specifications. Dimensions and square footage are approximate and subject to change. Builder reserves the right to change specifications for purposes of improving product. Copyright Westridge Builders, Inc. All Rights Reserved. It is unlawful for anyone to use or copy these plans without the permission of Westridge Builders, Inc.