



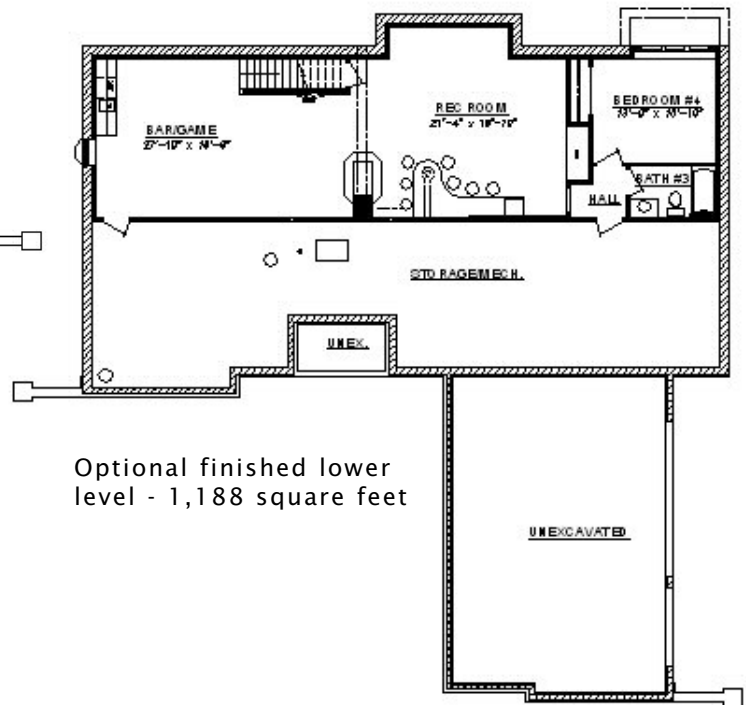
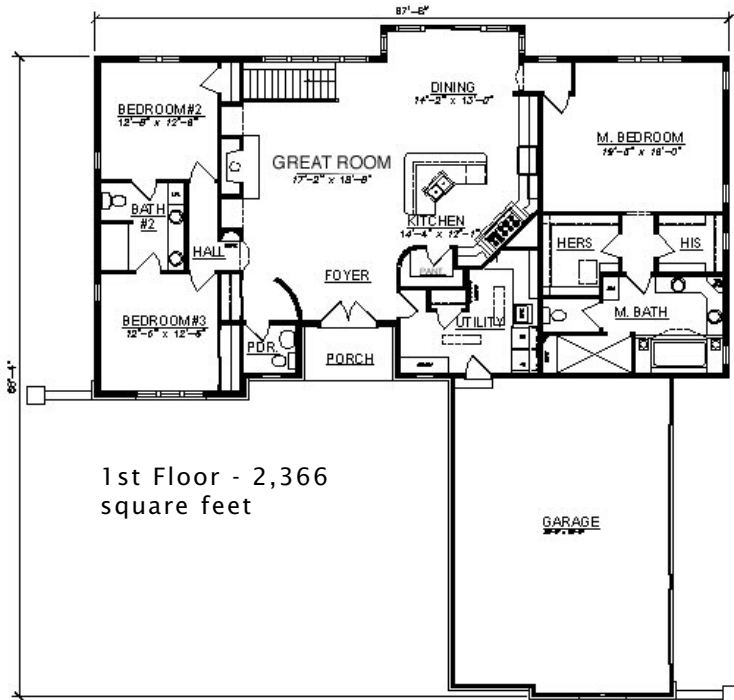
The Antigua II is a beautiful ranch design that adds curved walls, large bedrooms and a very open kitchen that blends seamlessly into the large great-room. A Jack and Jill bathroom separates the 2nd and 3rd bedrooms while the master suite offers a sizable bathroom and his & her walk-in closets.

## See a sales associate for pricing and complete inclusions

- GE® microwave & dishwasher (black, white or almond) ★Energy Star
- built-in entertainment center in greatroom
- lighting, carpet, tile, hardware allowance
- Kohler faucets & whirlpool tub
- Lindsay® Earthwise windows ★Energy Star
- direct vent Lennox® fireplace ★Energy Star
- orange peel wall texture
- large open staircase to lower level with iron spindles
- over sized custom stove surround
- master bath with large walk-in ceramic tile shower
- white painted 4 1/4" casing & 6 1/2" base
- 10' 1st floor walls and 8' interior doors
- 6-panel Masonite interior doors
- double front door entrance
- painted walls throughout
- cabinet hardware
- prefinished cabinets in oak, maple, beech, birch, or thermafoil, all with hidden hinges
- molded marble counters in all baths, laminate counter-tops to remainder of home
- layered composite floors in kitchen, dinette, utility room, foyer & all baths
- 15-year TUFF-N-DRI® Foundation Waterproofing ★Energy Star
- Tyvek® Housewrap with OSB to exterior ★Energy Star
- 2x6 16" on center construction
- TJI Silent Floors
- 12-course basement
- garage door openers
- power vented water heater ★Energy Star
- wire shelf & pole in closets
- Carrier® high efficiency furnace & air conditioner ★Energy Star
- OnQ® structured wiring
- 25-year asphalt shingles by Owens Corning®
- erosion control
- complete cleanup services

Green Built Home Certification is marked in *green*  
Energy Star ratings are marked with ★Energy Star

Westridge's seasoned sales staff will help design, customize and build your home. Customization is FREE and an essential part of designing everything you dream your new home should be. See a sales associate Saturdays and Sundays from 1-4 in the models for more information.



## Preferred Vendor Highlight

Westridge Builders uses the finest contractors in the area. You can research their products and services under the **PREFERRED VENDORS** menu on [www.westridgebuilders.com](http://www.westridgebuilders.com)



Photography, floorplans, inclusions and front elevations are representations of final product and are subject to change. Please refer to bid sheet for exact specifications. Dimensions and square footage are approximate and subject to change. Builder reserves the right to change specifications for purposes of improving product. Copyright Westridge Builders, Inc. All Rights Reserved. It is unlawful for anyone to use or copy these plans without the permission of Westridge Builders, Inc.