

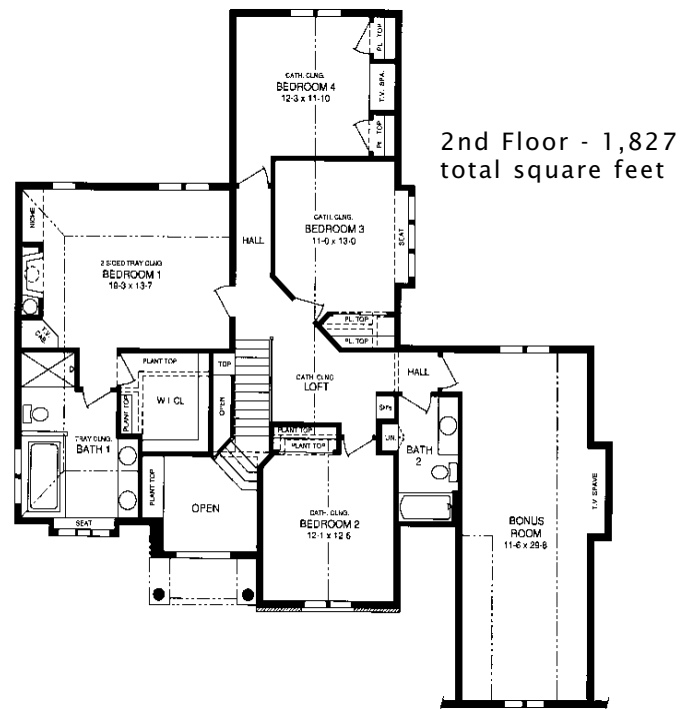
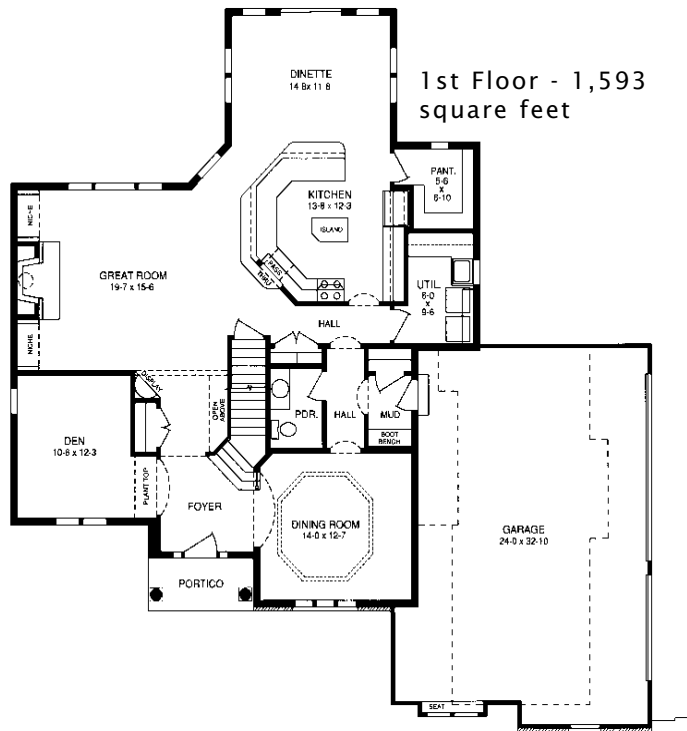
The Autumn Gate VI is a 2-story home that offers several great opportunities for customization such as adding built-in cabinetry and a gas fireplace to the master bedroom. This 4 bedroom design allows for a 5th bedroom or "bonus room" over the garage.

## See a sales associate for pricing and complete inclusions

- GE® microwave & dishwasher (black, white or almond) ★Energy Star
- built-in entertainment center in greatroom
- lighting, carpet, tile & hardware allowance
- Kohler® faucets & whirlpool tub
- Lennox® fireplace (per model)
- Lindsay® Earthwise windows ★Energy Star
- orange peel wall texture
- cabinet hardware
- prefinished cabinets in oak, maple, beech, birch, or thermafoil, all with hidden hinges
- built-in cabinets at master bedroom w/optional fireplace
- special lit ceiling in dining room
- 6-panel Masonite interior doors
- white painted 2 1/4" casing & 3 1/4" base
- 9' 1st floor walls and raised ceilings on 2nd floor
- painted walls throughout
- molded marble counters in all baths, laminate counter-tops to remainder of home
- layered composite floors in kitchen, dinette, utility room, mudroom, foyer & all baths
- iron spindles on main staircase
- Carrier® high efficiency furnace & air conditioner ★Energy Star
- 15-year TUFF-N-DRI® Foundation Waterproofing ★Energy Star
- Tyvek® Housewrap with OSB to exterior ★Energy Star
- 2x6 16" on center construction
- TJI Silent Floors
- 12-course basement
- garage door openers
- power vented water heater ★Energy Star
- OnQ® structured wiring
- 25-year asphalt shingles by Owens Corning®
- erosion control
- complete cleanup services

Green Built Home Certification is marked in *green*  
 Energy Star ratings are marked with ★Energy Star

Westridge's seasoned sales staff will help design, customize and build your home. Customization is FREE and an essential part of designing everything you dream your new home should be. See a sales associate Saturdays and Sundays from 1-4 in the models for more information.



## Preferred Vendor Highlight

Westridge Builders uses the finest contractors in the area. You can research their products and services under the **PRE-FERRED VENDORS** menu on [www.westridgebuilders.com](http://www.westridgebuilders.com)

**drexel**  
INTERIORS<sup>TM</sup>  
**OUTDOORLIGHTING**  
PERSPECTIVES®

Photography, floorplans, inclusions and front elevations are representations of final product and are subject to change. Please refer to bid sheet for exact specifications. Dimensions and square footage are approximate and subject to change. Builder reserves the right to change specifications for purposes of improving product. Copyright Westridge Builders, Inc. All Rights Reserved. It is unlawful for anyone to use or copy these plans without the permission of Westridge Builders, Inc.