



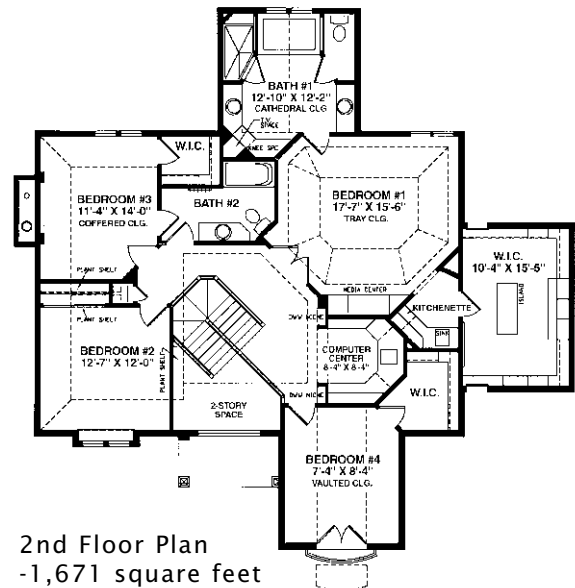
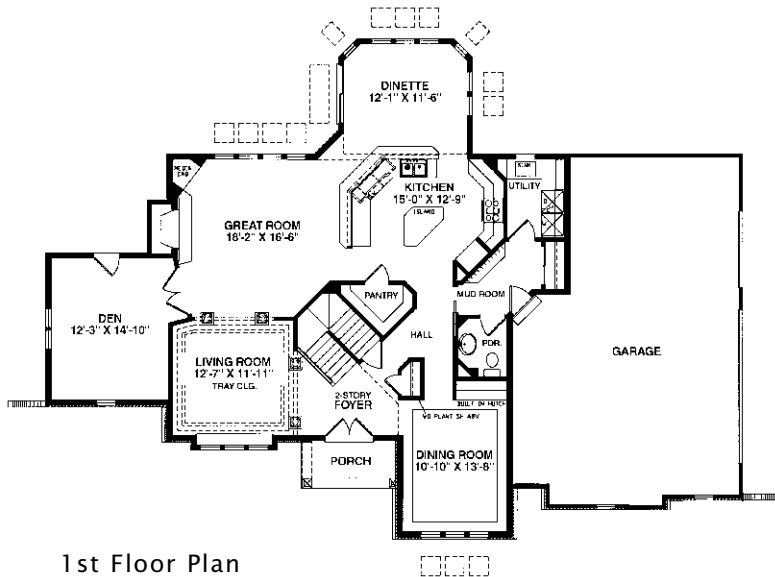
This former MBA Parade Of Home award-winner has a fantastic exterior with a smart floorplan. A living room, great room, dining room, and dinette center around the open kitchen for easy living. Four bedrooms and two full baths give the family plenty of room upstairs.

See a sales associate for pricing and complete inclusions

- GE® microwave & dishwasher (black, white or almond) ★Energy Star
- lighting, carpet, hardware, tile allowance
- Heatilator® wood burning fireplace
- Total Standard Kohler® plumbing fixtures and plumbing upgrade allowance
- Andersen® casement windows ★Energy Star
- wood panel above fireplace
- granite kitchen countertop & butler pantry
- stained maple or oak custom cabinetry in kitchen including stepped cabinets, selected fronts with glass doors, and raised panels with crown molding
- wet bar/media center in greatroom
- built-in dining room hutch
- wood spindles on main staircase
- large computer center
- painted walls throughout w/multiple colors & coats
- ceramic tile counters & floors in baths & util. room
- hardwood floors in kitchen, dinette, halls #1 & #2, powder room, dining room (border only), & foyer
- built-in wetbar in master bedroom
- raised ceilings at greatroom, master suite & 2nd floor
- 6-panel pine doors
- stained 3 1/4" oak casing, 4 3/4" oak base
- wood shelf & pole in closets
- combination storm and screen to front door
- Carrier® high efficiency furnace & air conditioner ★Energy Star
- Liftmaster® garage door openers
- cultured stone and Hardiplank™ cement board exterior
- 15-year TUFF-N-DRI® Foundation Waterproofing ★Energy Star
- Tyvek® Housewrap with OSB to exterior ★Energy Star
- 2x6 16" on center construction
- complete cleanup services
- Elk™ 30-year dimensional shingle
- 12-course basement (13 with full exposure)
- composite trim and cement board soffits
- power vented water heater ★Energy Star

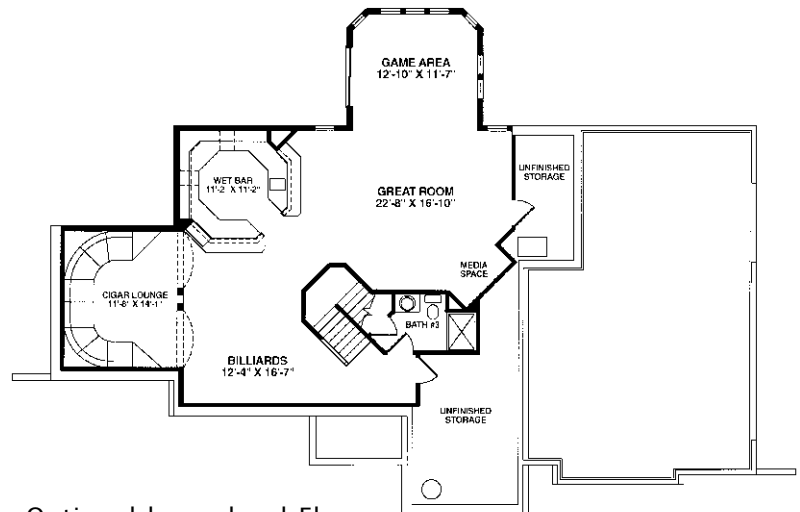
Green Built Home Certification is marked in *green*
Energy Star ratings are marked with ★Energy Star

Westridge's seasoned sales staff will help design, customize and build your home. Customization is FREE and an essential part of designing everything you dream your new home should be. See a sales associate Saturdays and Sundays from 1-4 in the models for more information.



Preferred Vendor Highlight

Westridge Builders uses the finest contractors in the area. You can research their products and services under the **PREFERRED VENDORS** menu on www.westridgebuilders.com



Optional lower level Floor Plan
-1,273 square feet

Photography, floorplans, inclusions and front elevations are representations of final product and are subject to change. Please refer to bid sheet for exact specifications. Dimensions and square footage are approximate and subject to change. Builder reserves the right to change specifications for purposes of improving product. Copyright Westridge Builders, Inc. All Rights Reserved. It is unlawful for anyone to use or copy these plans without the permission of Westridge Builders, Inc.