

shown with optional stone outcroppings



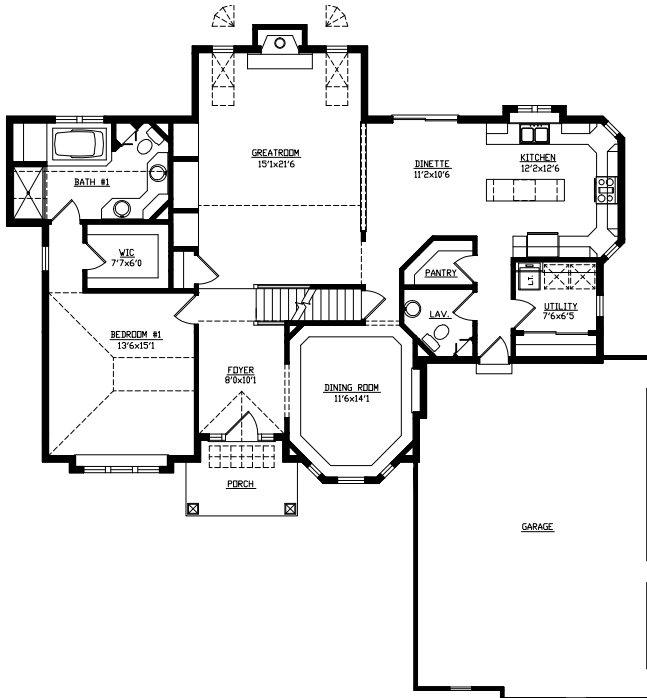
This classy home features sky lights and quarter-circle windows in the 2-story greatroom. The open kitchen and dinette are serviced by the adjacent pantry and utility area. A first floor master suite and formal dining room round out the main floor while another 2 bedrooms and a full bath are found on the second floor.

See a sales associate for pricing and complete inclusions

- GE® microwave & dishwasher (black, white or almond) ★Energy Star
- lighting, carpet, hardware, tile allowance
- Heatilator® wood burning fireplace
- Total Standard Kohler® plumbing fixtures and plumbing upgrade allowance
- Andersen® casement windows ★Energy Star
- wood panel above fireplace
- granite kitchen countertop
- stained maple or oak custom cabinetry in kitchen including stepped cabinets, selected fronts with glass doors, and raised panels with crown molding
- media center in greatroom
- wood spindles on main staircase
- painted walls throughout w/multiple colors & coats
- ceramic tile counters & floors in baths & util. room
- hardwood floors in kitchen, dinette, halls #1 & #2, powder room, dining room (border only), & foyer
- raised ceilings at greatroom, master suite & 2nd floor
- 6-panel pine doors
- stained 3 1/4" oak casing, 4 3/4" oak base
- wood shelf & pole in closets
- combination storm and screen to front door
- Carrier® high efficiency furnace & air conditioner ★Energy Star
- Liftmaster® garage door openers
- real brick and Hardiplank™ cement board exterior
- 15-year TUFF-N-DRI® Foundation Waterproofing ★Energy Star
- Tyvek® Housewrap with OSB to exterior ★Energy Star
- 2x6 16" on center construction
- complete cleanup services
- Elk™ 30-year dimensional shingle
- 12-course basement (13 with full exposure)
- composite trim and cement board soffits
- power vented water heater ★Energy Star

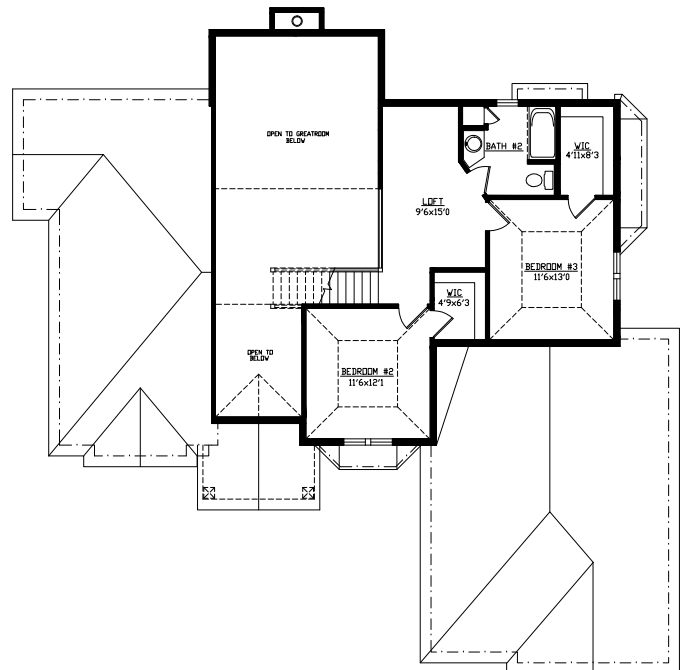
Green Built Home Certification is marked in *green*
Energy Star ratings are marked with ★Energy Star

Westridge's seasoned sales staff will help design, customize and build your home. Customization is FREE and an essential part of designing everything you dream your new home should be. See a sales associate Saturdays and Sundays from 1-4 in the models for more information.



1st Floor Plan
-1,681 square feet

2nd Floor Plan
-688 square feet



Preferred Vendor Highlight

Westridge Builders uses the finest contractors in the area. You can research their products and services under the **PREFERRED VENDORS** menu on www.westridgebuilders.com

L.H. Krueger
AND SON INC.

Roofing • Siding • Sheet Metal • Seamless Gutters

drexel
INTERIORS

Photography, floorplans, inclusions and front elevations are representations of final product and are subject to change. Please refer to bid sheet for exact specifications. Dimensions and square footage are approximate and subject to change. Builder reserves the right to change specifications for purposes of improving product. Copyright Westridge Builders, Inc. All Rights Reserved. It is unlawful for anyone to use or copy these plans without the permission of Westridge Builders, Inc.