



Model in Spencer's Pass in Menomonee Falls

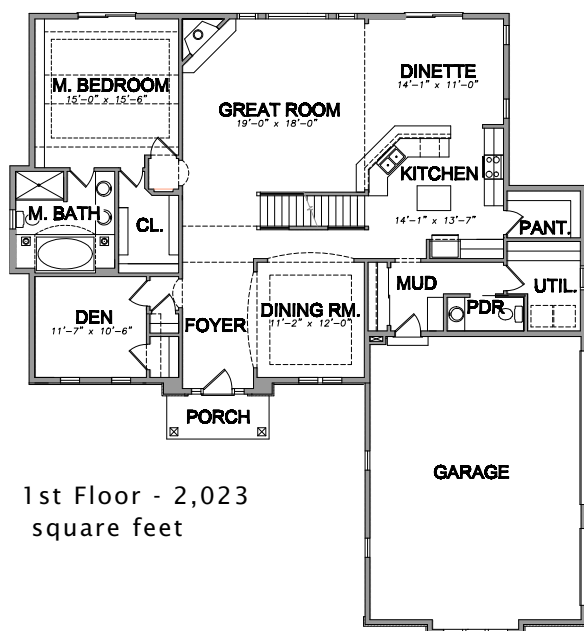
The Brookside Craftsman combines cultured stone and low maintenance shake siding for a great new look. The Brookside Craftsman has a 2-story great-room, special ceilings, a spacious bonus room over the garage, and all the features of our popular Brookside series.

See a sales associate for pricing and complete inclusions

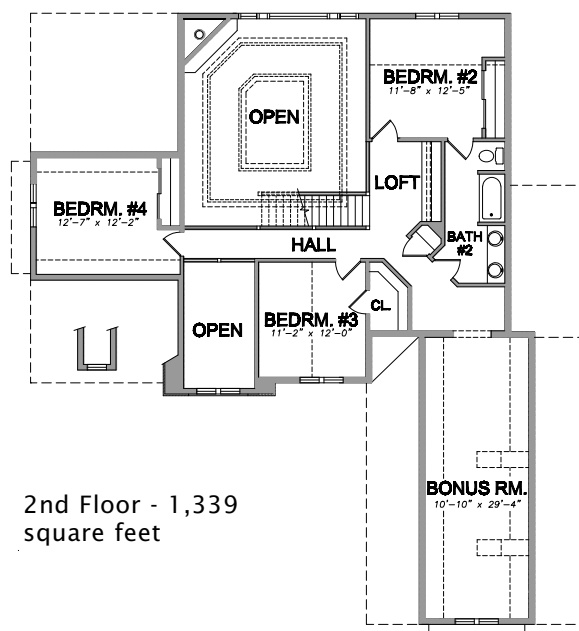
- GE® complete appliance package ★Energy Star
- lighting, carpet, tile, hardware allowance
- upgraded Kohler® faucets & whirlpool tub
- Lennox® fireplace
- Lindsay® Earthwise windows ★Energy Star
- 2-panel Masonite interior doors
- special lit & raised ceiling in greatroom, master bed room, den, bedroom 2 & 3 and bath 2
- master bath w/whirlpool & pillars, barreled ceiling with niches
- white painted 2 1/4" casing & 3 1/4" base
- painted walls throughout with multiple colors
- skylights to bonus room
- orange peel wall texture
- cabinet hardware
- prefinished cabinets in maple, beech, parawood, or thermafoil, all with hidden hinges
- 9' first floor walls
- granite countertops to kitchen & LL bar
- remnant granite in all baths
- hardwood floors in kitchen, dinette and foyer
- ceramic tile floors in utility room, & all baths
- iron spindles on main staircase
- wire shelf & pole in closets
- Carrier® high efficiency furnace & air conditioner ★Energy Star
- 15-year TUFF-N-DRI® Foundation Waterproofing ★Energy Star
- Tyvek® Housewrap with OSB to exterior ★Energy Star
- 2x6 16" on center construction
- TJI Silent Floors
- 13-course basement
- garage door openers
- power vented water heater ★Energy Star
- OnQ® structured wiring
- 25-year asphalt shingles by Owens Corning®
- erosion control
- complete cleanup services
- Energy Star Rated and Green Built home

Green Built Home Certification is marked in *green*
Energy Star ratings are marked with ★Energy Star

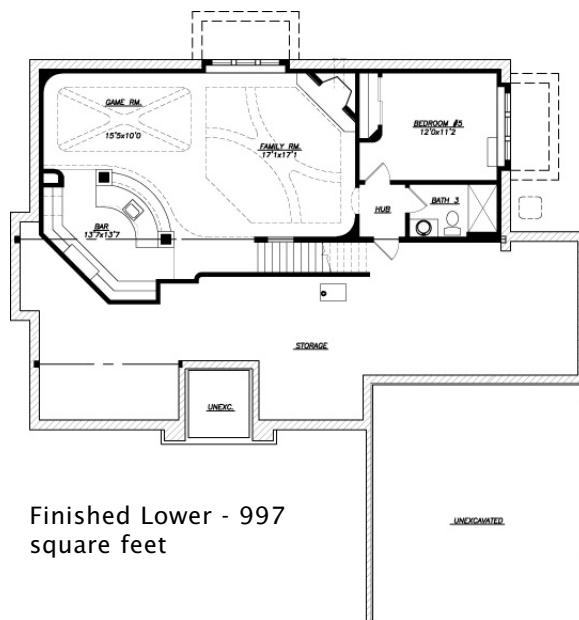
Westridge's seasoned sales staff will help design, customize and build your home. Customization is FREE and an essential part of designing everything you dream your new home should be. See a sales associate Saturdays and Sundays from 1-4 in the models for more information.



1st Floor - 2,023 square feet



2nd Floor - 1,339 square feet



Finished Lower - 997 square feet

Preferred Vendor Highlight

Westridge Builders uses the finest contractors in the area. You can research their products and services under the **PREFERRED VENDORS** menu on www.westridgebuilders.com

DuPont™
Tyvek®
Weatherization Systems

QuietRock®
HIGHER PERFORMANCE, HIGHER RELIABILITY,
LOWER COST SOUNDPROOFING SOLUTIONS.

Photography, floorplans, inclusions and front elevations are representations of final product and are subject to change. Please refer to bid sheet for exact specifications. Dimensions and square footage are approximate and subject to change. Builder reserves the right to change specifications for purposes of improving product. Copyright Westridge Builders, Inc. All Rights Reserved. It is unlawful for anyone to use or copy these plans without the permission of Westridge Builders, Inc.