



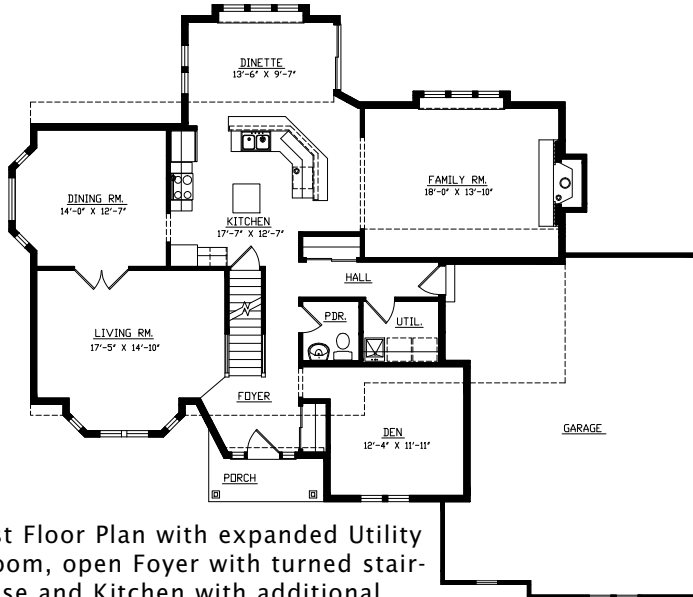
The Burton III is a 2-story design with plenty of space including a formal living room and dining room. A large family room opens to the kitchen and dinette making for contemporary living.

See a sales associate for pricing and complete inclusions

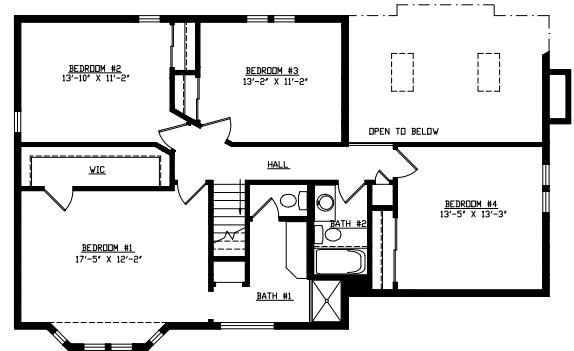
- GE® microwave & dishwasher (black, white or almond) ★Energy Star
- lighting, carpet, hardware, tile allowance
- granite kitchen countertop
- Heatilator® wood burning fireplace
- Total Standard Kohler® plumbing fixtures and plumbing upgrade allowance
- Andersen® casement windows ★Energy Star
- stained maple or oak custom cabinetry
- painted walls throughout w/multiple colors & coats
- ceramic tile counters & floors in baths, utility room
- raised ceilings at foyer, family room & dinette
- hardwood floors in kitchen, dinette, powder room, hall, den, & foyer
- wood spindles on 1st & 2nd floor
- fireplace surround with wood mantle
- 6-panel pine doors
- stained 3 1/4" oak casing, 4 3/4" oak base
- wood shelf & pole in closets
- combination storm and screen to front door
- Carrier® high efficiency furnace & air conditioner ★Energy Star
- Hardiplank™ cement board exterior
- Liftmaster® garage door openers
- 15-year TUFF-N-DRI® Foundation Waterproofing ★Energy Star
- Tyvek® Housewrap with OSB to exterior ★Energy Star
- 2x6 16" on center construction
- complete cleanup services
- Elk™ 30-year dimensional shingle
- 12-course basement (13 with full exposure)
- double subfloor system
- composite trim and cement board soffits
- power vented water heater ★Energy Star

Green Built Home Certification is marked in *green*
Energy Star ratings are marked with ★Energy Star

Westridge's seasoned sales staff will help design, customize and build your home. Customization is FREE and an essential part of designing everything you dream your new home should be. See a sales associate Saturdays and Sundays from 1-4 in the models for more information.



1st Floor Plan with expanded Utility Room, open Foyer with turned staircase and Kitchen with additional Cabinetry - 1,527 square feet



2nd floor plan with turned staircase, 3 Bedroom, Whirlpool and wide open Foyer - 1,180 total square feet

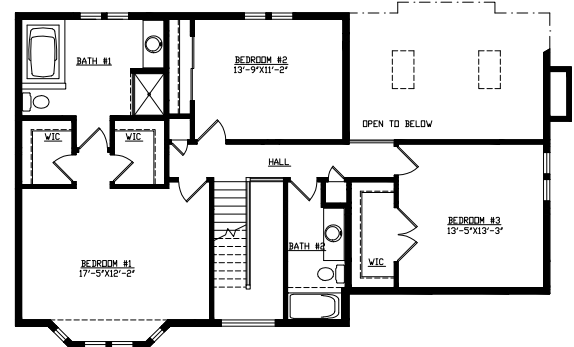
Preferred Vendor Highlight

Westridge Builders uses the finest contractors in the area. You can research their products and services under the **PREFERRED VENDORS** menu on www.westridgebuilders.com



TECHTERIORS

Intelligent Environments™



Optional Room over Family Room can be added to any Burton home.

Photography, floorplans, inclusions and front elevations are representations of final product and are subject to change. Please refer to bid sheet for exact specifications. Dimensions and square footage are approximate and subject to change. Builder reserves the right to change specifications for purposes of improving product. Copyright Westridge Builders, Inc. All Rights Reserved. It is unlawful for anyone to use or copy these plans without the permission of Westridge Builders, Inc.