



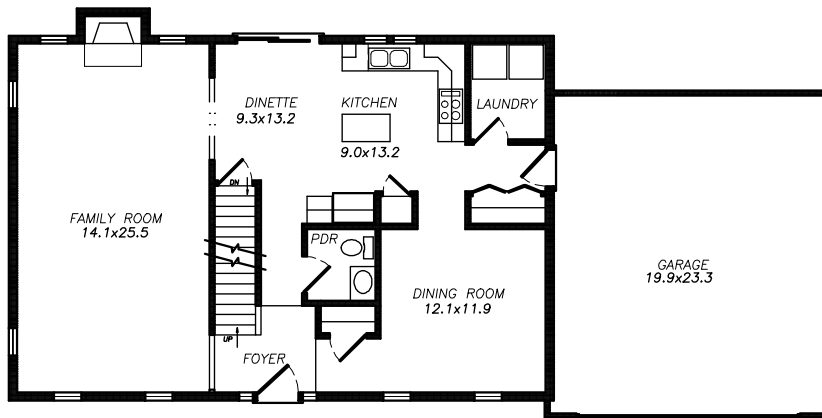
The Cedarburg I is a traditional saltbox design with a contemporary floorplan. The 9-foot ceilings on the first floor make this 2,091 square foot home feel much larger. Have the family over for dinner in the formal dining room.

See a sales associate for pricing and complete inclusions

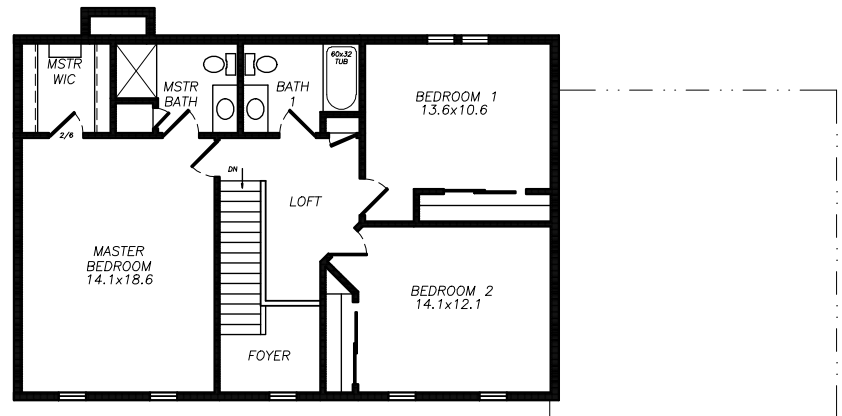
- Frigidaire™ microwave and dishwasher ★Energy Star
- lighting, carpet, tile, hardware allowance
- Lindsay® Earthwise windows ★Energy Star
- Mansfield™, Aker™, and Kohler™ plumbing fixtures
- Standard Cardell® cabinetry with hidden hinges (selected styles incl. oak, birch, beech, thermafoil)
- paneled Masonite interior doors
- laminate countertops throughout
- white painted 2 1/4" casing & 3 1/4" base
- white painted walls throughout
- laminate countertops
- vinyl floors in kitchen, dinette, utility room, foyer & remaining baths
- wire shelf & pole in closets
- ComfortMaker™ Furnace and Air Conditioner ★Energy Star
- TJI Silent Floor® System
- 15-year TUFF-N-DRI® Foundation Waterproofing ★Energy Star
- Tyvek® Housewrap with OSB to exterior ★Energy Star
- 2x6 16" on center construction
- 2-car garage
- Owens Corning® 25-year asphalt shingles
- complete cleanup services

Green Built Home Certification is marked in *green*  
Energy Star ratings are marked with ★Energy Star

Westridge's seasoned sales staff will help design, customize and build your home. Customization is FREE and an essential part of designing everything you dream your new home should be. See a sales associate Saturdays and Sundays from 1-4 in the models for more information.



1st Floor -  
1,073 square feet  
(shown with optional fire-place)



2nd Floor -  
1,018 square feet

## Preferred Vendor Highlight

Westridge Builders uses the finest contractors in the area. You can research their products and services under the **PREFERRED VENDORS** menu on [www.westridgebuilders.com](http://www.westridgebuilders.com)



Photography, floorplans, inclusions and front elevations are representations of final product and are subject to change. Please refer to bid sheet for exact specifications. Dimensions and square footage are approximate and subject to change. Builder reserves the right to change specifications for purposes of improving product. Copyright Westridge Builders, Inc. All Rights Reserved. It is unlawful for anyone to use or copy these plans without the permission of Westridge Builders, Inc.