



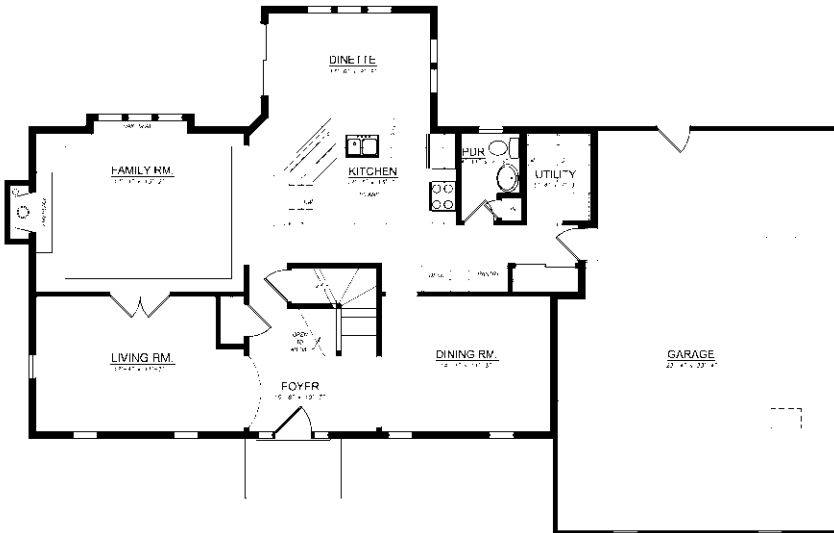
The Chesapeake II is a very attractive saltbox design with multiple dormers and brick belt and step. Inside the fireplace warms the family room, which is open to the kitchen. A formal dining room, living room and 4 upstairs bedrooms make this a great new take on a classic design.

See a sales associate for pricing and complete inclusions

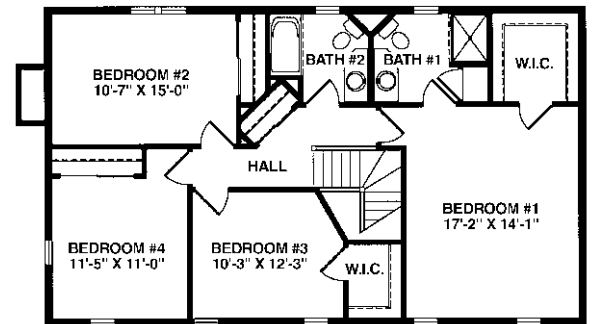
- GE® microwave & dishwasher (black, white or almond) ★Energy Star
- lighting, carpet, hardware, tile allowance
- combination storm and screen to front door
- Heatilator® wood burning fireplace
- Total Standard Kohler® plumbing fixtures and plumbing upgrade allowance
- granite kitchen countertop
- stained maple or oak custom cabinetry in kitchen
- Andersen® casement windows, double hung windows ★Energy Star
- painted walls throughout w/multiple colors & coats
- ceramic tile counters & floors in baths, utility room
- hardwood floors in kitchen, dinette, powder room, hall, family room (border only), & foyer
- wood spindles on main staircase
- 6-panel pine doors
- stained 3 1/4" oak casing, 4 3/4" oak base
- wood shelf & pole in closets
- Hardiplank™ cement board front
- dormers & cupola
- Carrier® high efficiency furnace & air conditioner ★Energy Star
- Liftmaster® garage door openers
- 15-year TUFF-N-DRI® Foundation Waterproofing ★Energy Star
- Tyvek® Housewrap with OSB to exterior ★Energy Star
- 2x6 16" on center construction
- complete cleanup services
- Elk™ 30-year dimensional shingle
- 12-course basement (13 with full exposure)
- composite trim and cement board soffits
- power vented water heater ★Energy Star

Green Built Home Certification is marked in *green*
Energy Star ratings are marked with ★Energy Star

Westridge's seasoned sales staff will help design, customize and build your home. Customization is FREE and an essential part of designing everything you dream your new home should be. See a sales associate Saturdays and Sundays from 1-4 in the models for more information.



Chesapeake II 1st Floor Plan -
1,344 square feet



Chesapeake I 2nd Floor Plan -
1,444 square feet

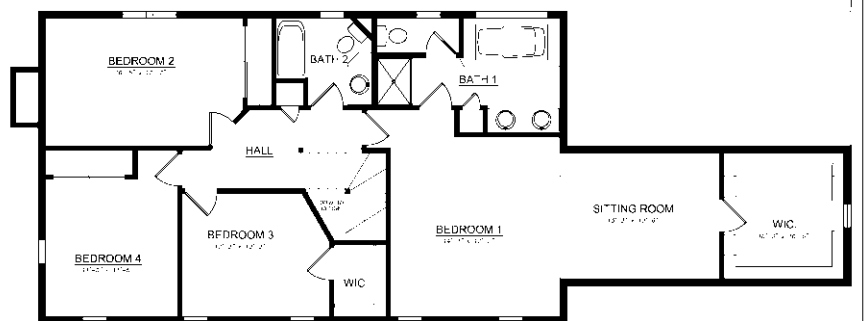
Preferred Vendor Highlight

Westridge Builders uses the finest contractors in the area. You can research their products and services under the **PREFERRED VENDORS** menu on www.westridgebuilders.com

drexel
INTERIORS



UNIQUESTONEPRODUCTS



Chesapeake II 2nd floor Sitting
Room & Expanded Master Bath
w/Whirlpool Tub - 1,420 total sq.ft.

Photography, floorplans, inclusions and front elevations are representations of final product and are subject to change. Please refer to bid sheet for exact specifications. Dimensions and square footage are approximate and subject to change. Builder reserves the right to change specifications for purposes of improving product. Copyright Westridge Builders, Inc. All Rights Reserved. It is unlawful for anyone to use or copy these plans without the permission of Westridge Builders, Inc.