



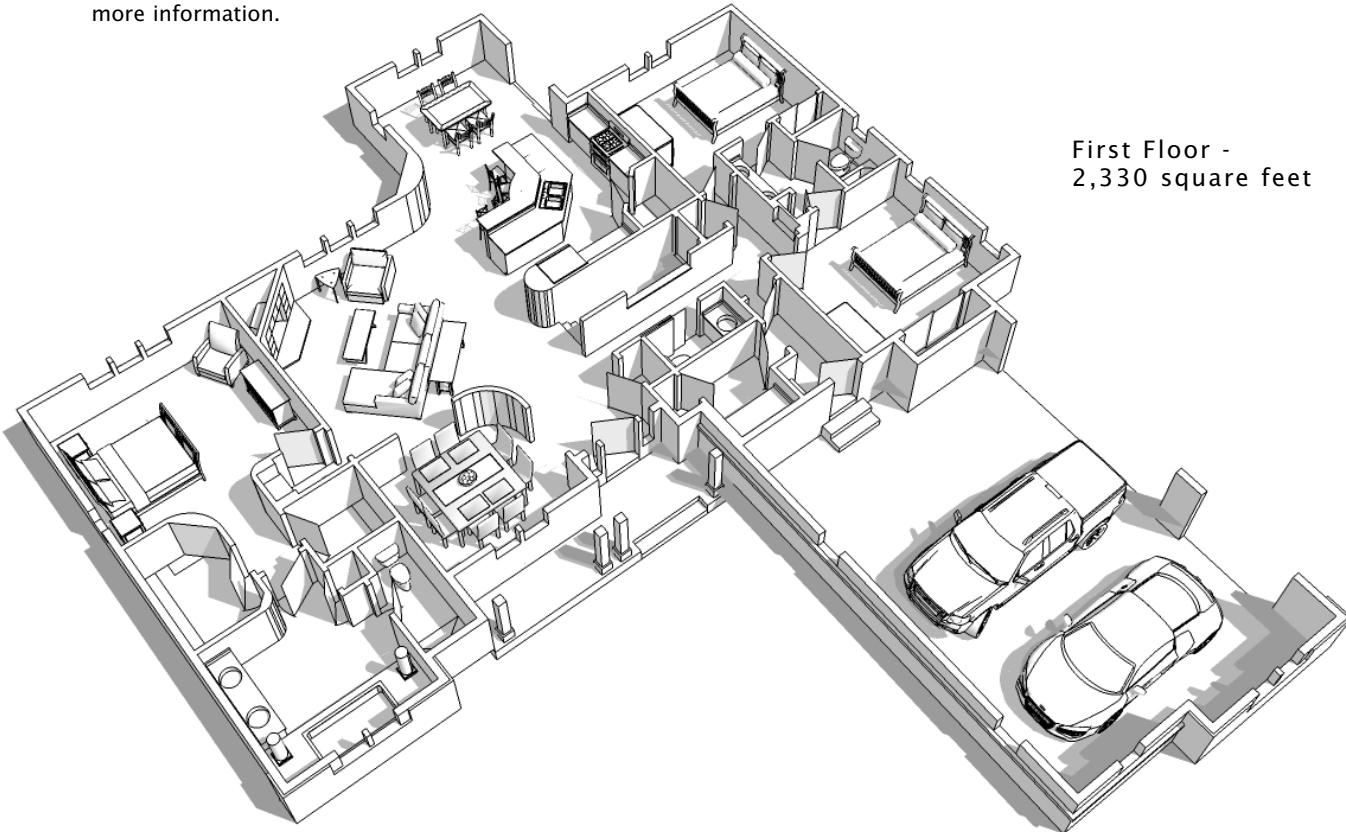
This lovely ranch design has wonderful details inside and out. The great room has a unique radiated-beamed ceiling to go along with the other special ceilings and niches. This 3-bedroom, 2 full bath home also has a formal dining room.

See a sales associate for pricing and complete inclusions

- GE® microwave & dishwasher (black, white or almond) ★Energy Star
- lighting, carpet, tile, hardware allowance
- Kohler® faucets & whirlpool tub
- Lindsay® Earthwise windows ★Energy Star
- 6-panel Masonite interior doors
- orange peel wall texture
- Lennox® fireplace (per model)
- cabinet hardware
- prefinished cabinets in oak, maple, beech, birch, or thermafoil, all with hidden hinges
- special ceilings in greatroom, dining room, master bedroom, bath 2, bedroom 2, and bedroom 3
- white painted 2 1/4" casing & 3 1/4" trim
- master bath w/whirlpool & pillars, barreled ceiling with niches
- 9-foot first floor walls
- molded marble counters in all baths, laminate counter-tops to remainder of home
- layered composite floors in kitchen, dinette, utility room, foyer & all baths
- intricate specialty ceilings throughout
- wire shelf & pole in closets
- Carrier® high efficiency furnace & air conditioner ★Energy Star
- 15-year TUFF-N-DRI® Foundation Waterproofing ★Energy Star
- Tyvek® Housewrap with OSB to exterior ★Energy Star
- 2x6 16" on center construction
- TJI Silent Floors
- 12-course basement
- garage door openers
- power vented water heater ★Energy Star
- OnQ® structured wiring
- 25-year asphalt shingles by Owens Corning®
- his and hers walk-in-closets at master bedroom
- Jack and Jill bath
- large covered porch
- oversized kitchen
- erosion control
- complete cleanup services

Green Built Home Certification is marked in *green*
Energy Star ratings are marked with ★Energy Star

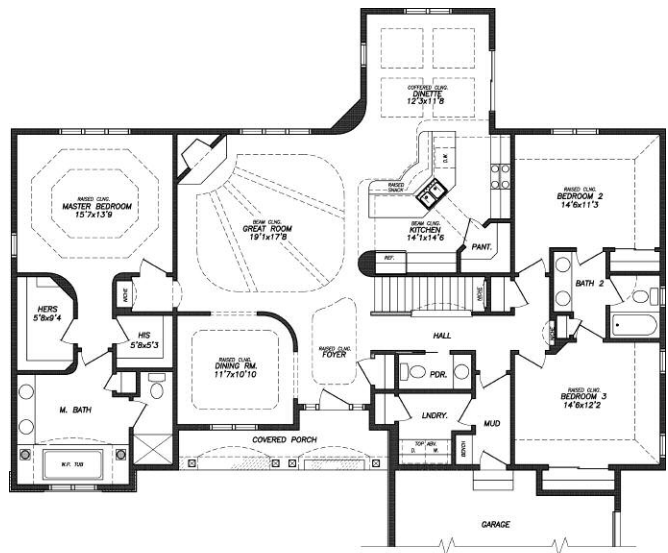
Westridge's seasoned sales staff will help design, customize and build your home. Customization is FREE and an essential part of designing everything you dream your new home should be. See a sales associate Saturdays and Sundays from 1-4 in the models for more information.



First Floor -
2,330 square feet

Preferred Vendor Highlight

Westridge Builders uses the finest contractors in the area. You can research their products and services under the **PREFERRED VENDORS** menu on www.westridgebuilders.com



Photography, floorplans, inclusions and front elevations are representations of final product and are subject to change. Please refer to bid sheet for exact specifications. Dimensions and square footage are approximate and subject to change. Builder reserves the right to change specifications for purposes of improving product. Copyright Westridge Builders, Inc. All Rights Reserved. It is unlawful for anyone to use or copy these plans without the permission of Westridge Builders, Inc.