



The Geneva series of homes follows the Westridge tradition of high quality and sharp design. This large home combines an open concept with traditional rooms such as a formal dining room and family room.

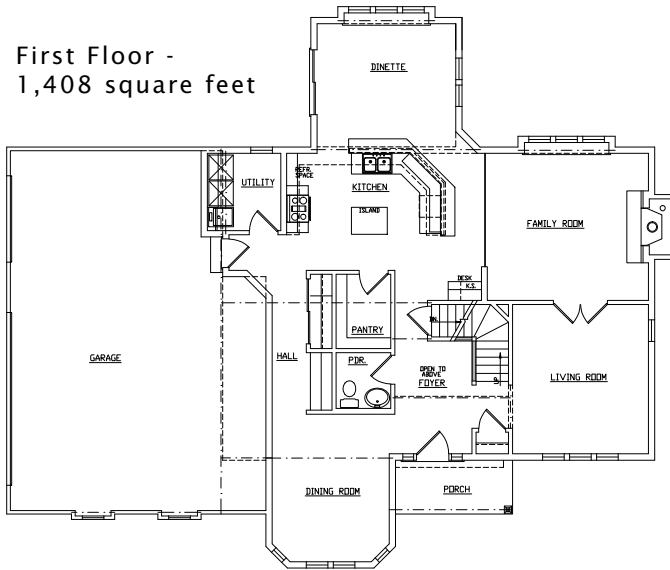
See a sales associate for pricing and complete inclusions

- GE® microwave & dishwasher (black, white or almond) ★Energy Star
- lighting, carpet, hardware, tile allowance
- granite countertops in kitchen
- Total Standard Kohler® plumbing fixtures and plumbing upgrade allowance
- Andersen® casement windows ★Energy Star
- stained maple or oak custom cabinetry in kitchen and raised panels
- wood shelf & pole in closets
- Heatilator® wood burning fireplace
- painted walls throughout w/multiple colors & coats
- 6-panel pine doors
- stained & painted 3 1/4" casing and 4 3/4" base
- ceramic tile counters & floors in baths, utility room
- hardwood floors in kitchen, dinette, powder room, hall, dining room, pantry, & foyer
- wood spindles at first floor & second floors
- combination storm and screen
- Hardiplank™ cement board exterior
- Carrier® high efficiency furnace & air conditioner ★Energy Star
- Liftmaster® garage door openers
- 15-year TUFF-N-DRI® Foundation Waterproofing ★Energy Star
- Tyvek® Housewrap with OSB to exterior ★Energy Star
- 2x6 16" on center construction
- complete cleanup services
- Elk™ 30-year dimensional shingle
- 12-course basement (13 with full exposure)
- composite trim and cement board soffits
- power vented water heater ★Energy Star

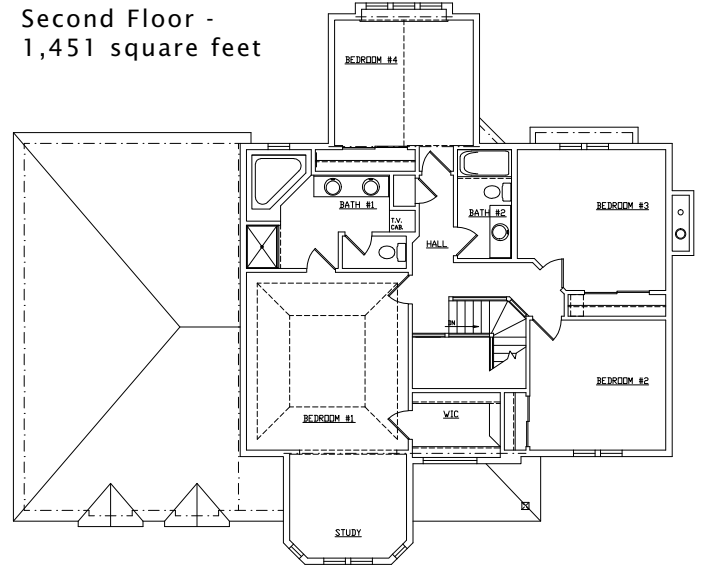
Green Built Home Certification is marked in *green*
Energy Star ratings are marked with ★Energy Star

Westridge's seasoned sales staff will help design, customize and build your home. Customization is FREE and an essential part of designing everything you dream your new home should be. See a sales associate Saturdays and Sundays from 1-4 in the models for more information.

First Floor -
1,408 square feet



Second Floor -
1,451 square feet



Preferred Vendor Highlight

Westridge Builders uses the finest contractors in the area. You can research their products and services under the **PREFERRED VENDORS** menu on www.westridgebuilders.com

NEU'S
Hardware Gallery

CAMPBELLSPORT
BUILDING
SUPPLY

Photography, floorplans, inclusions and front elevations are representations of final product and are subject to change. Please refer to bid sheet for exact specifications. Dimensions and square footage are approximate and subject to change. Builder reserves the right to change specifications for purposes of improving product. Copyright Westridge Builders, Inc. All Rights Reserved. It is unlawful for anyone to use or copy these plans without the permission of Westridge Builders, Inc.