



The Geneva IV is a great 4-bedroom design that has rooms for both formal and casual entertaining such as living room, family room, dining room and more. A 2-story foyer with open staircase creates an impressive entryway to this popular design.

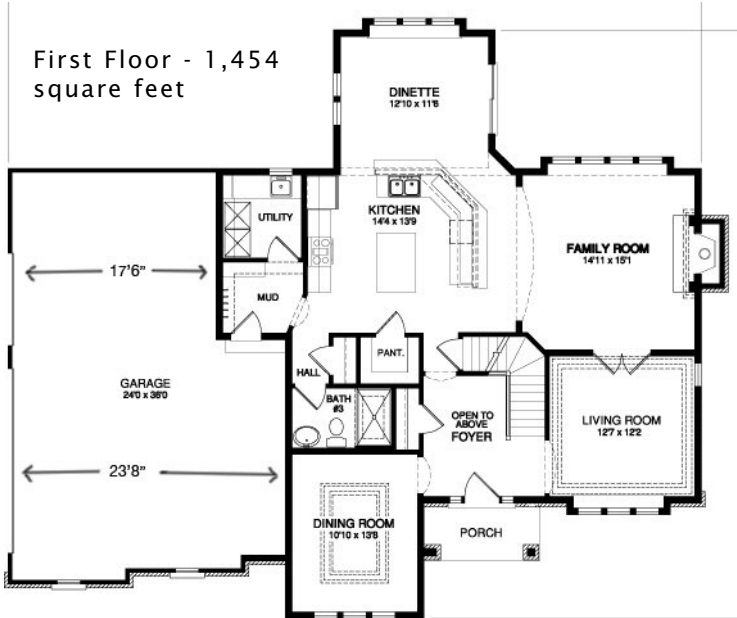
See a sales associate for pricing and complete inclusions

- GE® microwave & dishwasher (black, white or almond) ★Energy Star
- lighting, carpet, hardware, tile allowance
- granite countertops in kitchen
- Total Standard Kohler® plumbing fixtures and plumbing upgrade allowance
- Andersen® casement windows ★Energy Star
- wood shelf & pole in closets
- Heatilator® wood burning fireplace
- mud room with boot bench & hooks
- rope lighting to foyer, living room & dining room
- stained maple or oak custom cabinetry
- painted walls throughout w/multiple colors & coats
- 9' walls on first floor
- 6-panel pine doors
- stained & painted 3 1/4" casing and 4 3/4" base
- ceramic tile counters & floors in baths, utility room
- hardwood floors in kitchen, dinette, powder room, hall, dining room, pantry, & foyer
- Brazilian cherry border in dining room
- wood spindles at first floor & second floors
- combination storm and screen
- Carrier® high efficiency furnace & air conditioner ★Energy Star
- Liftmaster® garage door openers
- Hardiplank™ cement board & brick on front
- 15-year TUFF-N-DRI® Foundation Waterproofing ★Energy Star
- Tyvek® Housewrap with OSB to exterior ★Energy Star
- 2x6 16" on center construction
- complete cleanup services
- Elk™ 30-year dimensional shingle
- 12-course basement (13 with full exposure)
- composite trim and cement board soffits
- power vented water heater ★Energy Star

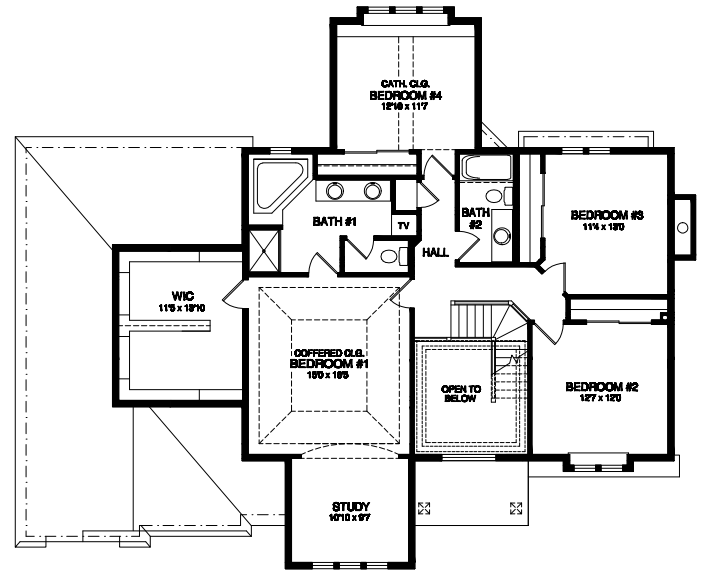
Green Built Home Certification is marked in **green**  
Energy Star ratings are marked with ★Energy Star

Westridge's seasoned sales staff will help design, customize and build your home. Customization is FREE and an essential part of designing everything you dream your new home should be. See a sales associate Saturdays and Sundays from 1-4 in the models for more information.

First Floor - 1,454 square feet

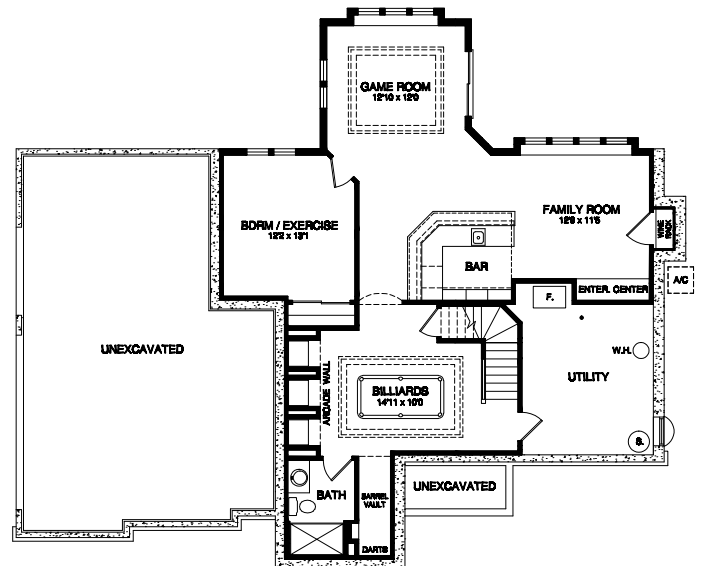


Second Floor - 1,530 square feet



## Preferred Vendor Highlight

Westridge Builders uses the finest contractors in the area. You can research their products and services under the **PREFERRED VENDORS** menu on [www.westridgebuilders.com](http://www.westridgebuilders.com)



Optional Finished Lower Level  
Adds 1,147 square feet

Photography, floorplans, inclusions and front elevations are representations of final product and are subject to change. Please refer to bid sheet for exact specifications. Dimensions and square footage are approximate and subject to change. Builder reserves the right to change specifications for purposes of improving product. Copyright Westridge Builders, Inc. All Rights Reserved. It is unlawful for anyone to use or copy these plans without the permission of Westridge Builders, Inc.