

Hartland House



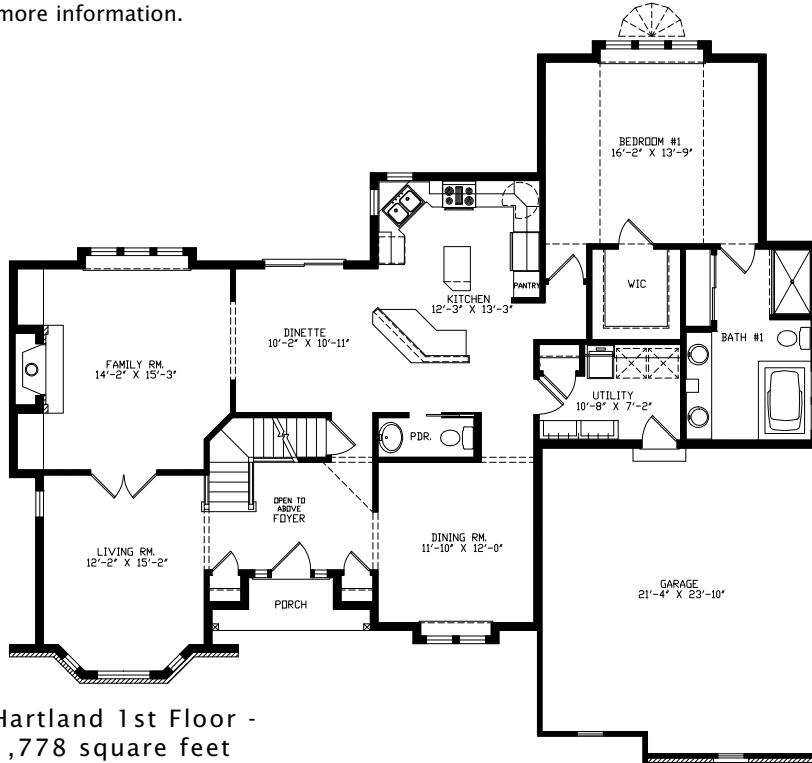
The Hartland House, has a classic exterior and a practical floorplan that allows for easy traffic. A first floor master and open concept kitchen area make this a very special design.

See a sales associate for pricing and complete inclusions

- GE® microwave & dishwasher (black, white or almond) ★Energy Star
- lighting, carpet, hardware, tile allowance
- combination storm and screen to front door
- Heatilator® wood burning fireplace
- Total Standard Kohler® plumbing fixtures and plumbing upgrade allowance
- granite kitchen countertop
- stained maple or oak custom cabinetry in kitchen
- Andersen® casement windows ★Energy Star
- painted walls throughout w/multiple colors & coats
- ceramic tile counters & floors in baths, utility room
- hardwood floors in kitchen, dinette, powder room, hall, & foyer
- wood spindles on main staircase
- 6-panel pine doors
- stained 3 1/4" oak casing, 4 3/4" oak base
- wood shelf & pole in closets
- Hardiplank™ cement board, and cultured stone front
- dormers
- Carrier® high efficiency furnace & air conditioner ★Energy Star
- Liftmaster® garage door openers
- 15-year TUFF-N-DRI® Foundation Waterproofing ★Energy Star
- Tyvek® Housewrap with OSB to exterior ★Energy Star
- 2x6 16" on center construction
- complete cleanup services
- Elk™ 30-year dimensional shingle
- 12-course basement (13 with full exposure)
- composite trim and cement board soffits
- power vented water heater ★Energy Star

Green Built Home Certification is marked in *green*
Energy Star ratings are marked with ★Energy Star

Westridge's seasoned sales staff will help design, customize and build your home. Customization is FREE and an essential part of designing everything you dream your new home should be. See a sales associate Saturdays and Sundays from 1-4 in the models for more information.



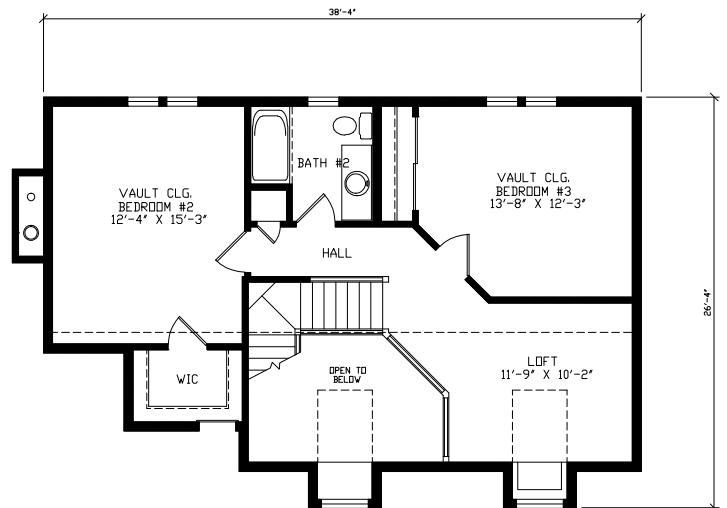
Preferred Vendor Highlight

Westridge Builders uses the finest contractors in the area. You can research their products and services under the **PREFERRED VENDORS** menu on www.westridgebuilders.com

**CALIFORNIA
CLOSETS®**

**L.H. Krueger
AND SON INC.**

Roofing • Siding • Sheet Metal • Seamless Gutters



Photography, floorplans, inclusions and front elevations are representations of final product and are subject to change. Please refer to bid sheet for exact specifications. Dimensions and square footage are approximate and subject to change. Builder reserves the right to change specifications for purposes of improving product. Copyright Westridge Builders, Inc. All Rights Reserved. It is unlawful for anyone to use or copy these plans without the permission of Westridge Builders, Inc.