

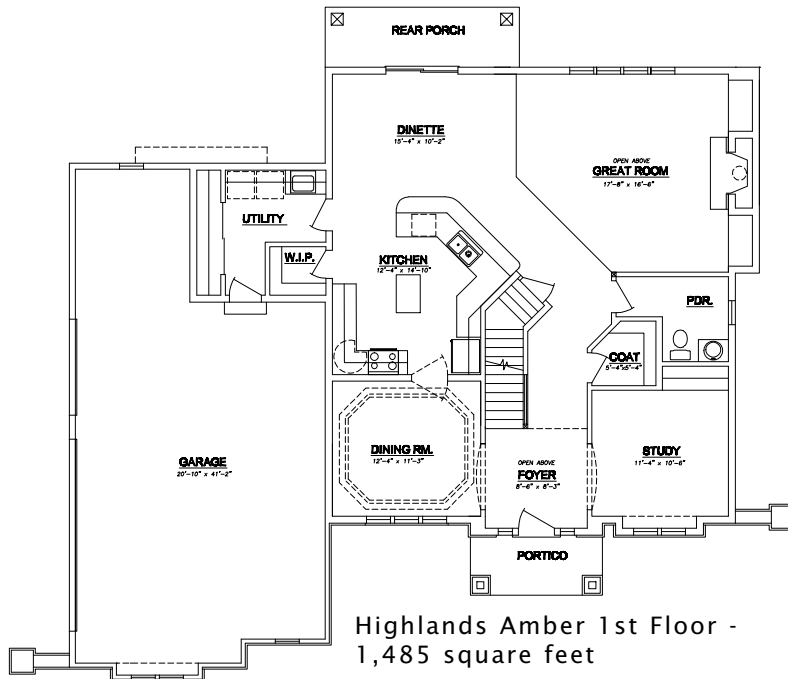
The Highlands Amber is a 2-story Life design that features a study and formal dining room on the main level. A 2 story greatroom is open to the dinette and kitchen. An open staircase leads you to an attractive loft that overlooks the greatroom.

## See a sales associate for pricing and complete inclusions

- GE® microwave & dishwasher (black, white or almond) ★Energy Star
- built-in entertainment center in greatroom
- lighting, carpet, tile & hardware allowance
- Kohler® faucets and whirlpool tub
- Lindsay® Earthwise windows ★Energy Star
- special lit ceiling in dining room
- Lennox® fireplace (per model)
- orange peel wall texture
- cabinet hardware
- prefinished cabinets in oak, maple, beech, birch, or thermafoil, all with hidden hinges
- 9' 1st floor walls and raised ceilings on 2nd floor
- 6-panel Masonite interior doors
- white painted 2 1/4" casing & 3 1/4" base
- iron spindles on main staircase
- painted walls throughout
- molded marble counters in all baths, laminate counter-tops to remainder of home
- layered composite floors in kitchen, dinette, utility room, foyer & all baths
- private study with built-in cabinets
- rear covered patio
- wire shelf & pole in closets
- 3.5 car garage
- Carrier® high efficiency furnace & air conditioner ★Energy Star
- 15-year TUFF-N-DRI® Foundation Waterproofing
- Tyvek® Housewrap with OSB to exterior
- 2x6 16" on center construction
- TJI Silent Floors
- 12-course basement
- garage door openers
- power vented water heater ★Energy Star
- OnQ® structured wiring
- 25-year asphalt shingles by Owens Corning®
- erosion control
- complete cleanup services

Green Built Home Certification is marked in *green*  
Energy Star ratings are marked with ★Energy Star

Westridge's seasoned sales staff will help design, customize and build your home. Customization is FREE and an essential part of designing everything you dream your new home should be. See a sales associate Saturdays and Sundays from 1-4 in the models for more information.



Highlands Amber 2nd Floor - 1,523 total square feet

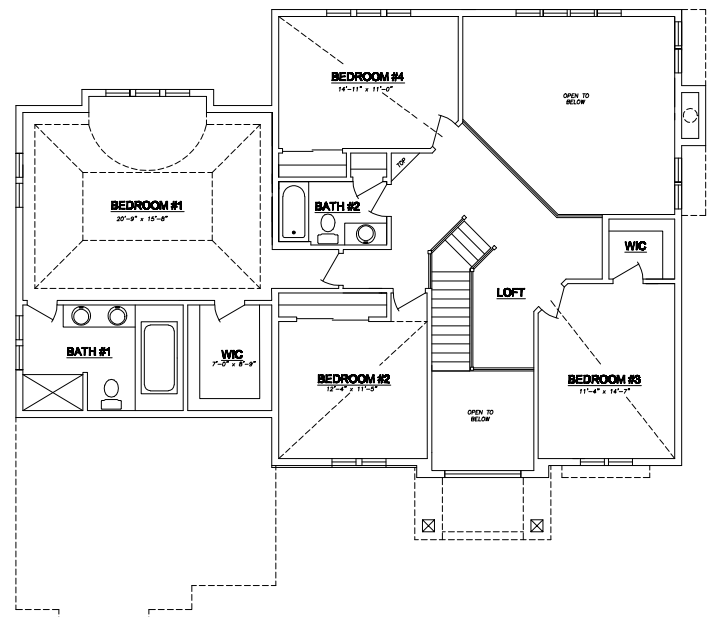
## Preferred Vendor Highlight

Westridge Builders uses the finest contractors in the area. You can research their products and services under the **PREFERRED VENDORS** menu on [www.westridgebuilders.com](http://www.westridgebuilders.com)

THE BOLD LOOK  
OF **KOHLER**®



**Interstate Heating**  
Heating and Air Conditioning



Photography, floorplans, inclusions and front elevations are representations of final product and are subject to change. Please refer to bid sheet for exact specifications. Dimensions and square footage are approximate and subject to change. Builder reserves the right to change specifications for purposes of improving product. Copyright Westridge Builders, Inc. All Rights Reserved. It is unlawful for anyone to use or copy these plans without the permission of Westridge Builders, Inc.