



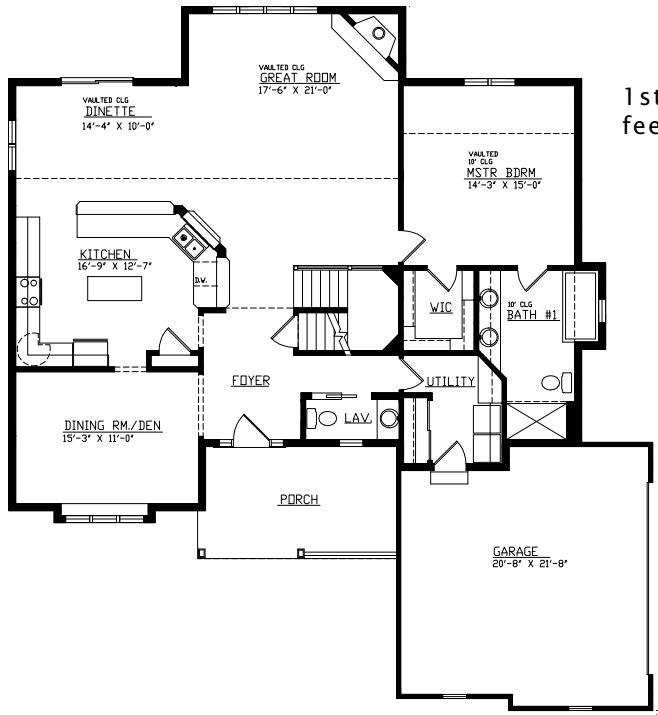
The Homestead IV is a 2-story design with a first floor master suite off the greatroom. This durable floorplan allows for a dining room or den off the foyer and 2 more bedrooms and a loft upstairs. The 2-story greatroom gives the Homestead IV a very classy interior.

## See a sales associate for pricing and complete inclusions

- GE® microwave & dishwasher (black, white or almond) ★Energy Star
- lighting, carpet, tile & hardware allowance
- Kohler® faucets, soaking tub in master bath
- Lindsay® Earthwise windows ★Energy Star
- orange peel wall texture
- Lennox® fireplace (per model)
- 6-panel Masonite interior doors
- white painted 2 1/4" casing & 3 1/4" base
- wood spindles on main staircase
- painted walls throughout
- raised ceilings in dinette, greatroom and master bath
- loft is open to dinette and greatroom
- cabinet hardware
- prefinished cabinets in oak, maple, beech, birch, or thermafoil, all with hidden hinges
- molded marble counters in all baths, laminate counter-tops to remainder of home
- layered composite floors in kitchen, dinette, utility room, foyer & all baths
- wire shelf & pole in closets
- Carrier® high efficiency furnace & air conditioner ★Energy Star
- 15-year TUFF-N-DRI® Foundation Waterproofing ★Energy Star
- Tyvek® Housewrap with OSB to exterior ★Energy Star
- 2x6 16" on center construction
- TJI Silent Floors
- 12-course basement
- garage door openers
- power vented water heater ★Energy Star
- OnQ® structured wiring
- 25-year asphalt shingles by Owens Corning®
- erosion control
- complete cleanup services

Green Built Home Certification is marked in *green*  
Energy Star ratings are marked with ★Energy Star

Westridge's seasoned sales staff will help design, customize and build your home. Customization is FREE and an essential part of designing everything you dream your new home should be. See a sales associate Saturdays and Sundays from 1-4 in the models for more information.



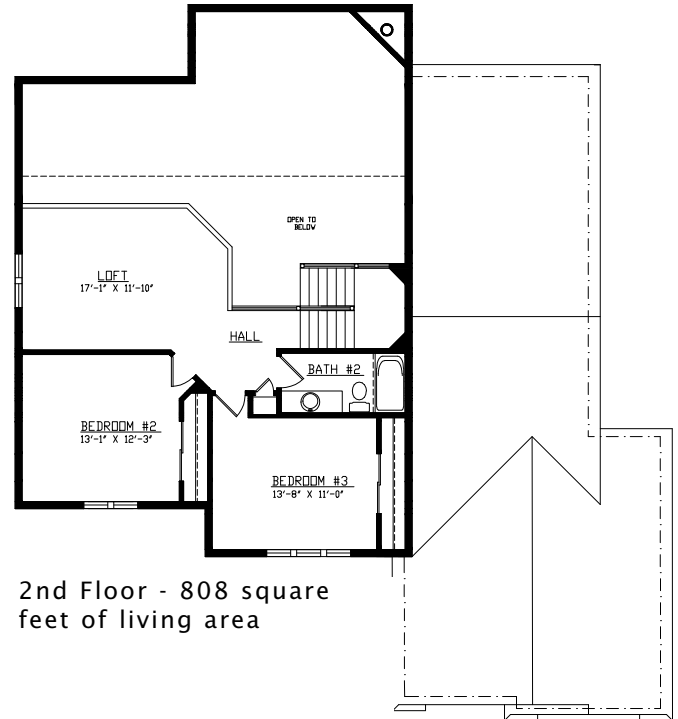
1st Floor - 1,705 square feet of living area

## Preferred Vendor Highlight

Westridge Builders uses the finest contractors in the area. You can research their products and services under the **PREFERRED VENDORS** menu on [www.westridgebuilders.com](http://www.westridgebuilders.com)

**NEU'S**  
*Hardware Gallery*

**JERRY**  
**HOEFLER**  
EXCAVATING  
INC.



2nd Floor - 808 square feet of living area

Photography, floorplans, inclusions and front elevations are representations of final product and are subject to change. Please refer to bid sheet for exact specifications. Dimensions and square footage are approximate and subject to change. Builder reserves the right to change specifications for purposes of improving product. Copyright Westridge Builders, Inc. All Rights Reserved. It is unlawful for anyone to use or copy these plans without the permission of Westridge Builders, Inc.