



The Indigo is another executive ranch that incorporates skylights, coffered ceiling in the kitchen, master bedroom and the formal dining room. An optional sunroom off the greatroom is a popular addition.

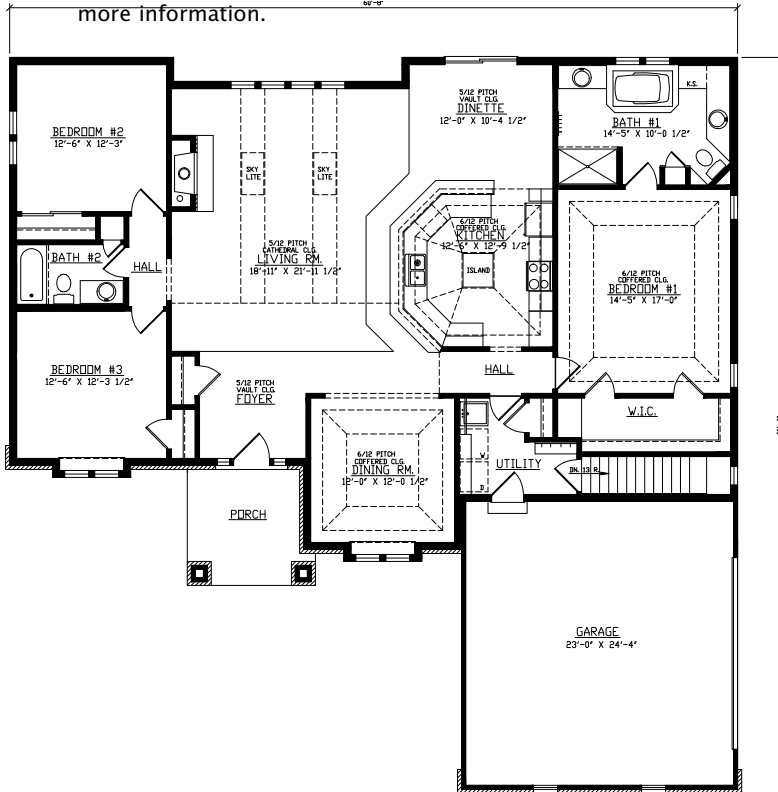
See a sales associate for pricing and complete inclusions

- GE® microwave & dishwasher (black, white or almond) ★Energy Star
- lighting, carpet, hardware, tile allowance
- Heatilator® wood burning fireplace
- skylights in greatroom
- granite kitchen countertop
- Total Standard Kohler® plumbing fixtures and plumbing upgrade allowance
- Andersen® casement windows ★Energy Star
- wood shelf & pole in closets
- painted walls throughout w/multiple colors & coats
- stained custom cabinetry
- 3/4" oak casing, 4 3/4" oak base
- stained birch woodwork with 6-panel pine doors
- ceramic tile counters & floors in baths & utility room
- hardwood floors in kitchen, dinette, powder room, hall, dining room, pantry & foyer
- 8-ft walls, raised ceilings
- separate vanities and makeup counter at master bath
- Hardiplank™ cement board & brick on front
- combination storm and screen
- Carrier® high efficiency furnace & air conditioner ★Energy Star
- Liftmaster® garage door openers
- 15-year TUFF-N-DRI® Foundation Waterproofing ★Energy Star
- Tyvek® Housewrap with OSB to exterior ★Energy Star
- 2x6 16" on center construction
- complete cleanup services
- Elk™ 30-year dimensional shingle
- 12-course basement (13 with full exposure)
- composite trim and cement board soffits
- power vented water heater ★Energy Star

Green Built Home Certification is marked in *green*
Energy Star ratings are marked with ★Energy Star

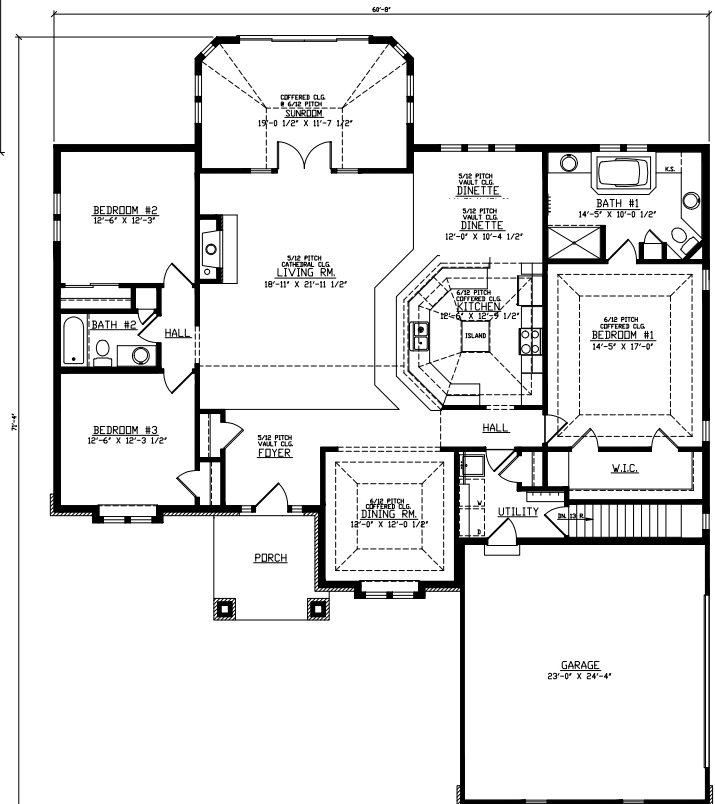
Westridge's seasoned sales staff will help design, customize and build your home. Customization is FREE and an essential part of designing everything you dream your new home should be. See a sales associate Saturdays and Sundays from 1-4 in the models for

more information.



Indigo I Main Level -
2,203 square feet

Indigo II Main Level -
2,439 square feet



Preferred Vendor Highlight

Westridge Builders uses the finest contractors in the area. You can research their products and services under the **PREFERRED VENDORS** menu on www.westridgebuilders.com

Andersen
WINDOWS • DOORS



Photography, floorplans, inclusions and front elevations are representations of final product and are subject to change. Please refer to bid sheet for exact specifications. Dimensions and square footage are approximate and subject to change. Builder reserves the right to change specifications for purposes of improving product. Copyright Westridge Builders, Inc. All Rights Reserved. It is unlawful for anyone to use or copy these plans without the permission of Westridge Builders, Inc.