

Shown here with optional boxed out bedroom window



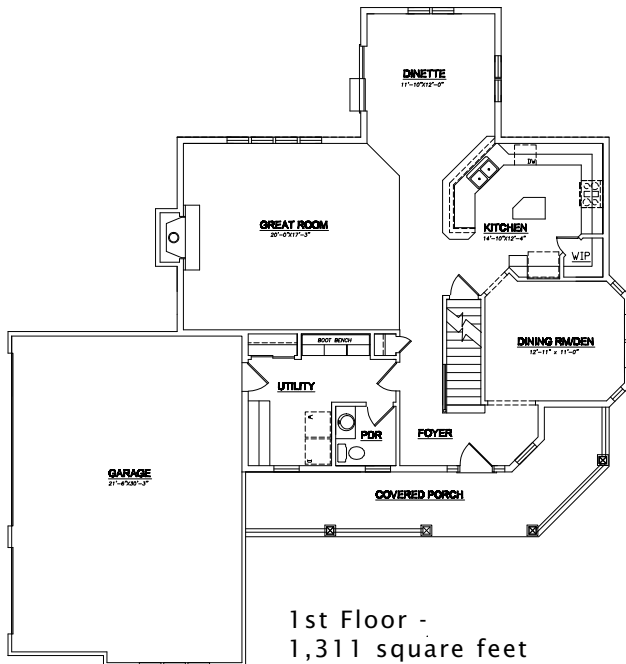
The Ivycrest III is an efficient 2-story home with an open concept that includes a large greatroom, kitchen and dinette. A formal dining room is situated off the kitchen and may be used as a den. A beautiful covered porch is a highlight of this design.

See a sales associate for pricing and complete inclusions

- GE® microwave & dishwasher (black, white or almond) ★Energy Star
- lighting, carpet, tile & hardware allowance
- Kohler® faucets & soak tub
- Lindsay® Earthwise windows ★Energy Star
- Lennox® fireplace (per model)
- cabinet hardware
- prefinished cabinets in oak, maple, beech, birch, or thermafoil, all with hidden hinges
- orange peel wall texture
- master bath w/soak tub & oversized vanity
- 6-panel Masonite interior doors
- white painted 2 1/4" casing & 3 1/4" base
- painted walls throughout
- special gable detail at front
- large wrap-around porch with decorative wood spindles
- molded marble counters in all baths, laminate counter-tops to remainder of home
- layered composite floors in kitchen, dinette, utility room, foyer & all baths
- wire shelf & pole in closets
- Carrier® high efficiency furnace & air conditioner ★Energy Star
- 15-year TUFF-N-DRI® Foundation Waterproofing ★Energy Star
- Tyvek® Housewrap with OSB to exterior ★Energy Star
- 2x6 16" on center construction
- TJI Silent Floors
- 12-course basement
- garage door openers
- power vented water heater ★Energy Star
- OnQ® structured wiring
- 25-year asphalt shingles by Owens Corning®
- erosion control
- complete cleanup services

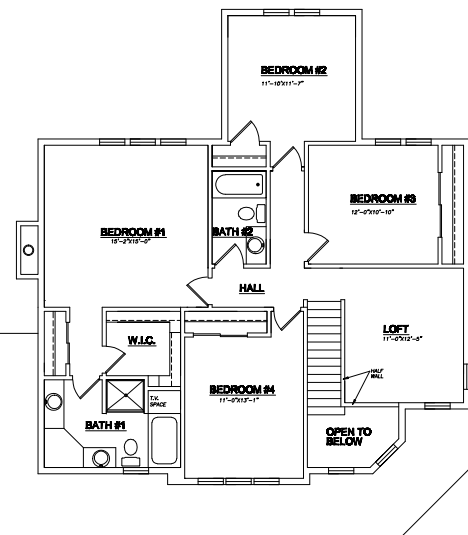
Green Built Home Certification is marked in *green*
Energy Star ratings are marked with ★Energy Star

Westridge's seasoned sales staff will help design, customize and build your home. Customization is FREE and an essential part of designing everything you dream your new home should be. See a sales associate Saturdays and Sundays from 1-4 in the models for more information.



Preferred Vendor Highlight

Westridge Builders uses the finest contractors in the area. You can research their products and services under the **PREFERRED VENDORS** menu on www.westridgebuilders.com



2nd Floor -
1,320 square feet

Photography, floorplans, inclusions and front elevations are representations of final product and are subject to change. Please refer to bid sheet for exact specifications. Dimensions and square footage are approximate and subject to change. Builder reserves the right to change specifications for purposes of improving product. Copyright Westridge Builders, Inc. All Rights Reserved. It is unlawful for anyone to use or copy these plans without the permission of Westridge Builders, Inc.