



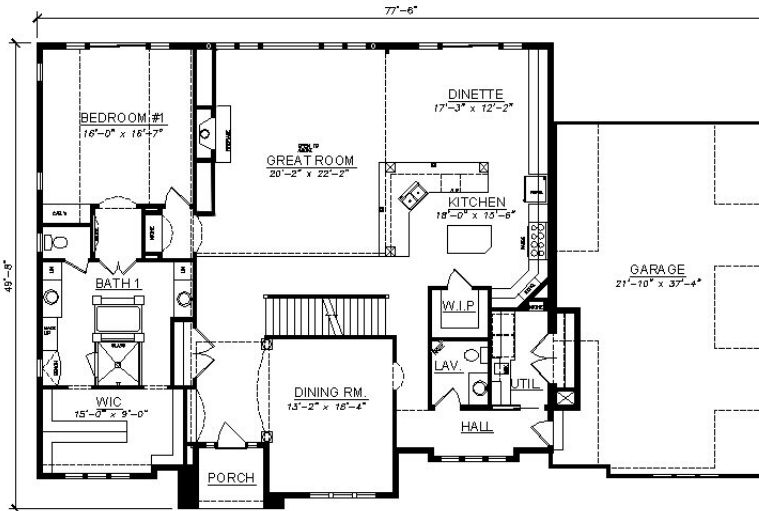
The Kapalua is one of the classiest designs in the Westridge line. Hand-forged iron, custom finishes, a luxury master bath and impressive 2-story great room are just a sampling of the Kapalua's top-notch amenities.

See a sales associate for pricing and complete inclusions

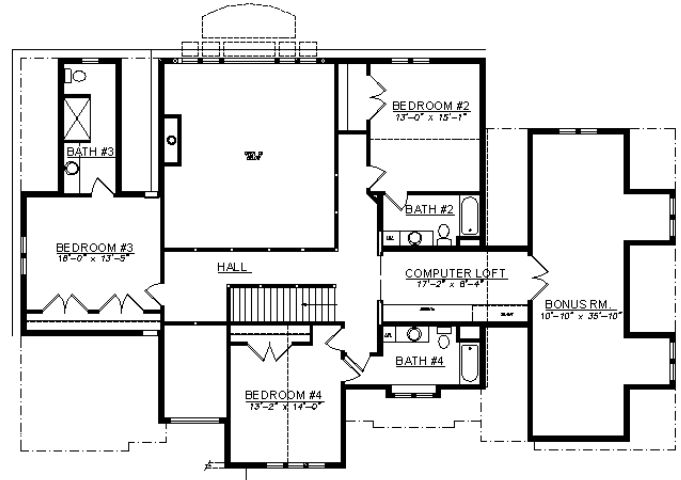
- GE® microwave, dishwasher, stove, refrigerator, hood fan, washer, dryer, plus under counter refrigerator & dishwasher in lower level ★Energy Star
- lighting, carpet, hardware, upgraded tile allowance
- Heatilator® wood burning fireplace with gas line/logs
- total Upgraded Kohler® plumbing fixtures
- Andersen® casement windows ★Energy Star
- California Closets®
- special custom cabinetry with special finishes
- 10' 1st fl. walls w/raised ceiling at master suite, bedroom #2 & bedroom #4
- built in cabinets at greatroom & computer loft
- oversized wide woodwork with solid core doors (8' tall doors on 1st floor)
- multiple color painted walls throughout
- granite kitchen countertop and lower level bar, stone in powder room
- ceramic tile counters, floors in baths, utility room, tub & showers
- ceramic tile floors in kitchen, dinette, greatroom, powder room, hall, pantry, foyer, & utility
- custom tile shower at master bath with special columns at master bath tub
- 3-sided fireplace at lower level
- hand-forged iron rails & spindles
- stone columns and fireplace surround to ceiling
- security, sound, central vac, and wiring allowance
- hand-forged iron inlays on kitchen cabinetry, walk-in pantry & bar
- stepped theater in lower level
- 2 Carrier® high efficiency furnaces and 2 air conditioners ★Energy Star
- Liftmaster® garage door openers
- all stucco exterior on front elevation with copper roofs
- Hardiplank™ cement board on sides & rear
- 15-year TUFF-N-DRI® Foundation Waterproofing
- Tyvek® Housewrap with OSB to exterior
- 2x6 16" on center construction
- complete cleanup services
- Elk™ 40-year dimensional shingle
- 12-course basement (13 with full exposure)
- composite trim and cement board soffits
- power vented water heater ★Energy Star

Green Built Home Certification is marked in *green*
Energy Star ratings are marked with ★Energy Star

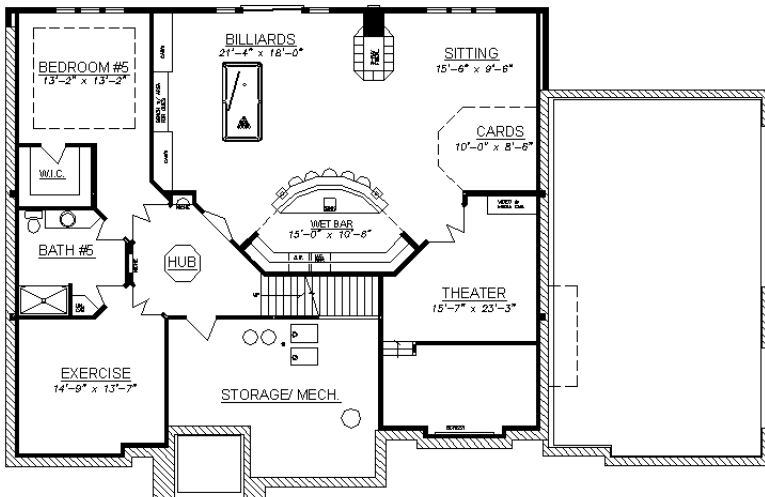
Westridge's seasoned sales staff will help design, customize and build your home. Customization is FREE and an essential part of designing everything you dream your new home should be. See a sales associate Saturdays and Sundays from 1-4 in the models for more information.



First Floor - 2,570 sq. ft.



Second Floor - 2,084 square feet



Optional Finished Lower Level -
2,081 square feet

Preferred Vendor Highlight

Westridge Builders uses the finest contractors in the area. You can research their products and services under the **PREFERRED VENDORS** menu on www.westridgebuilders.com

Andersen
WINDOWS • DOORS



Great Lakes
CounterTops
Suppliers of Laminite, Solid Surface,
Granite & Quartz Products

Photography, floorplans, inclusions and front elevations are representations of final product and are subject to change. Please refer to bid sheet for exact specifications. Dimensions and square footage are approximate and subject to change. Builder reserves the right to change specifications for purposes of improving product. Copyright Westridge Builders, Inc. All Rights Reserved. It is unlawful for anyone to use or copy these plans without the permission of Westridge Builders, Inc.