



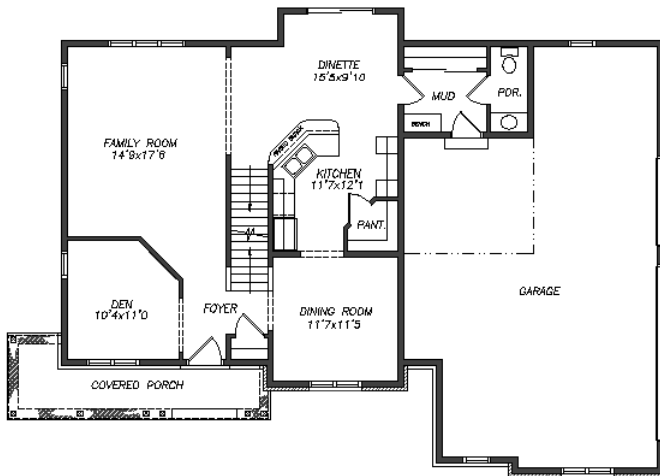
This 2-story has a great open concept on the first floor including a den and formal dining room. Upstairs you'll find 4 bedrooms and a conveniently placed laundry room. The master bedroom has special ceilings and an expansive walk-in closet.

See a sales associate for pricing and complete inclusions

- Frigidaire™ microwave & dishwasher
- lighting, carpet, tile, hardware allowances
- Lindsay® Earthwise windows ★Energy Star
- Mansfield™, Aker™, and Kohler™ plumbing fixtures
- Standard Cardell® cabinetry with hidden hinges (selected styles incl. oak, birch, beech, thermafoil)
- paneled Masonite interior doors
- laminate countertops throughout
- painted 2 1/4" case & 3 1/4" base
- painted walls throughout
- vinyl floors in kitchen, dinette, laundry, mudroom, foyer & baths
- wire shelf & pole in closets
- ComfortMaker™ Furnace and Air Conditioner ★Energy Star
- TJI Silent Floor® System
- 15-year TUFF-N-DRI® Foundation Waterproofing ★Energy Star
- Tyvek® Housewrap with OSB to exterior ★Energy Star
- 2x6 16" on center construction
- complete cleanup services
- Owens Corning® 25-year asphalt shingles
- 3-car garage

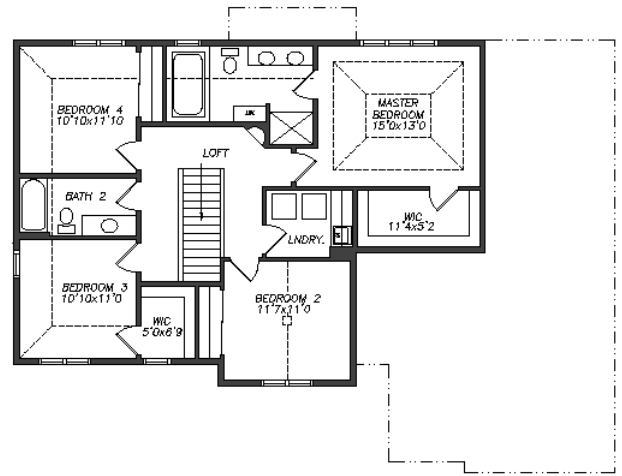
Green Built Home Certification is marked in *green*
Energy Star ratings are marked with ★Energy Star

Westridge's seasoned sales staff will help design, customize and build your home. Customization is FREE and an essential part of designing everything you dream your new home should be. See a sales associate Saturdays and Sundays from 1-4 in the models for more information.



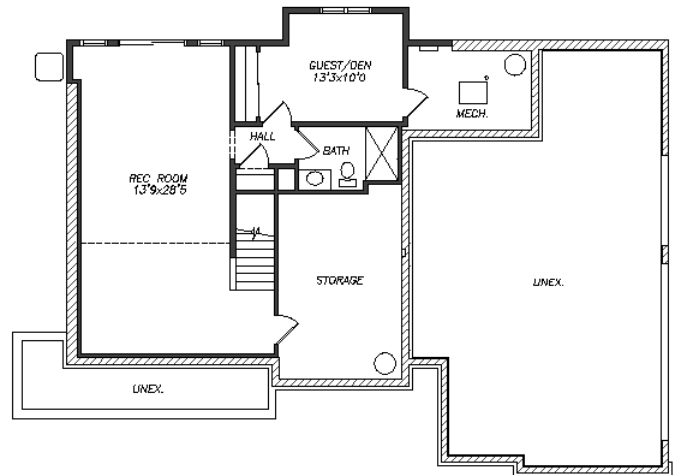
**FIRST
FLOOR PLAN**

1,118 square feet



**SECOND
FLOOR PLAN**

1,211 square feet



**LOWER
LEVEL PLAN**

Adds 747 square feet

Preferred Vendor Highlight

Westridge Builders uses the finest contractors in the area. You can research their products and services under the **PREFERRED VENDORS** menu on www.westridgebuilders.com

HALQUIST
STONE
NEU'S
Hardware Gallery

Photography, floorplans, inclusions and front elevations are representations of final product and are subject to change. Please refer to bid sheet for exact specifications. Dimensions and square footage are approximate and subject to change. Builder reserves the right to change specifications for purposes of improving product. Copyright Westridge Builders, Inc. All Rights Reserved. It is unlawful for anyone to use or copy these plans without the permission of Westridge Builders, Inc.