



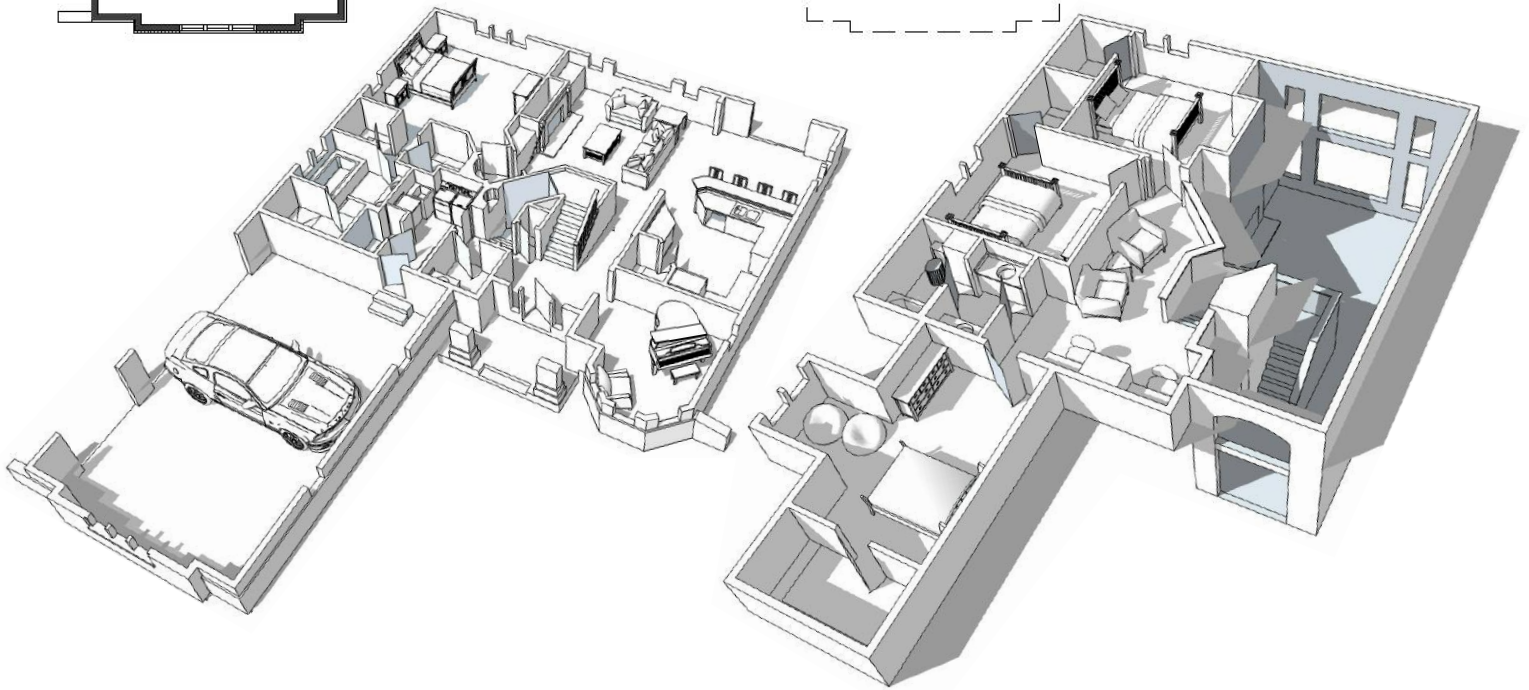
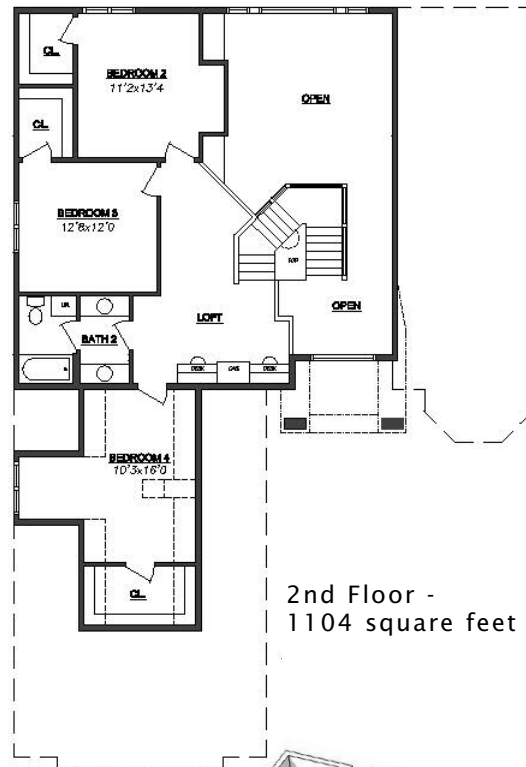
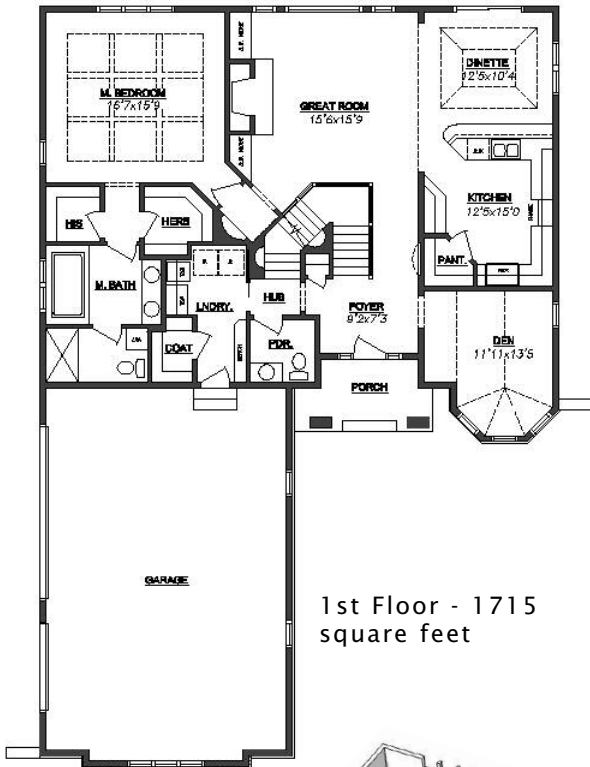
The Princeton is another great 2-story plan from Westridge's Life line of homes. This features a 1st-floor master suite with 3 bedrooms upstairs. A beautiful exterior gives this design a classic look that will last for years to come.

## See a sales associate for pricing and complete inclusions

- GE® microwave & dishwasher (black, white or almond) ★ *Energy Star*
- lighting, carpet, tile, hardware allowance
- direct vent Lennox® fireplace (per model) ★ *Energy Star*
- Kohler® faucets and whirlpool tub
- Lindsay® Earthwise windows ★ *Energy Star*
- orange peel wall texture
- cabinet hardware
- **prefinished cabinets in oak, maple, beech, birch, or thermafoil, all with hidden hinges**
- painted walls throughout
- 9' 1st floor walls
- 6-panel Masonite interior doors
- white painted 2 1/4" casing & 3 1/4" base
- molded marble counters in all baths, laminate counter-tops to remainder of home
- **layered composite floors in kitchen, dinette, utility room, foyer & all baths**
- wire shelf & pole in closets
- Carrier® high efficiency furnace & air conditioner ★ *Energy Star*
- **15-year TUFF-N-DRI® Foundation Waterproofing** ★ *Energy Star*
- **Tyvek® Housewrap with OSB to exterior** ★ *Energy Star*
- **2x6 16" on center construction**
- TJI Silent Floors
- OnQ® structured wiring
- power vented water heater ★ *Energy Star*
- 12-course basement
- OnQ® structured wiring
- 25-year asphalt shingles by Owens Corning®
- erosion control
- complete cleanup services

Green Built Home Certification is marked in **green**  
Energy Star ratings are marked with ★ *Energy Star*

Westridge's seasoned sales staff will help design, customize and build your home. Customization is FREE and an essential part of designing everything you dream your new home should be. See a sales associate Saturdays and Sundays from 1-4 in the models for more information.



Photography, floorplans, inclusions and front elevations are representations of final product and are subject to change. Please refer to bid sheet for exact specifications. Dimensions and square footage are approximate and subject to change. Builder reserves the right to change specifications for purposes of improving product. Copyright Westridge Builders, Inc. All Rights Reserved. It is unlawful for anyone to use or copy these plans without the permission of Westridge Builders, Inc.