



The Princeton III is a modification of the very popular Princeton from Westridge's Life line of homes. This home, like the original Princeton, features a 1st-floor master suite with 3 bedrooms upstairs. The enlarged greatroom, revised kitchen, and reworked foyer, were added even more luxury to an already impressive design.

See a sales associate for pricing and complete inclusions

- GE® microwave & dishwasher (black, white or almond) ★Energy Star
- lighting, carpet, tile, hardware allowance
- direct vent Lennox® fireplace (per model) ★Energy Star
- Kohler® faucets and whirlpool tub
- Lindsay® Earthwise windows ★Energy Star
- orange peel wall texture
- cabinet hardware
- prefinished cabinets in oak, maple, beech, birch, or thermafoil, all with hidden hinges
- painted walls throughout
- 9' 1st floor walls
- 6-panel Masonite interior doors
- white painted 2 1/4" casing & 3 1/4" base
- molded marble counters in all baths, laminate counter-tops to remainder of home
- layered composite floors in kitchen, dinette, utility room, foyer & all baths
- wire shelf & pole in closets
- Carrier® high efficiency furnace & air conditioner ★Energy Star
- 15-year TUFF-N-DRI® Foundation Waterproofing ★Energy Star
- Tyvek® Housewrap with OSB to exterior ★Energy Star
- 2x6 16" on center construction
- TJI Silent Floors
- OnQ® structured wiring
- power vented water heater ★Energy Star
- 12-course basement
- OnQ® structured wiring
- 25-year asphalt shingles by Owens Corning®
- erosion control
- complete cleanup services

Green Built Home Certification is marked in *green*
Energy Star ratings are marked with ★Energy Star



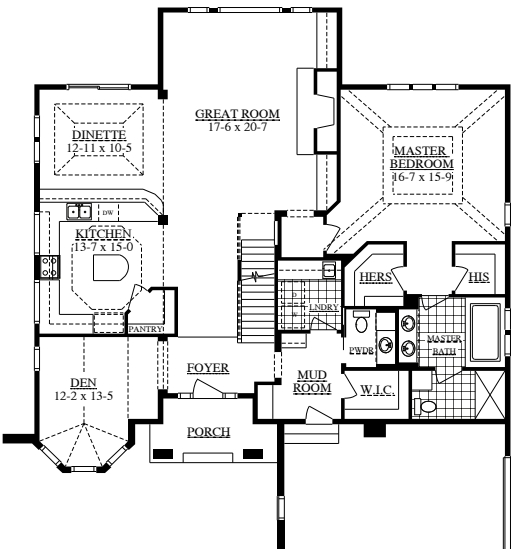
1st Floor - 1,864 square feet

The floor plan includes the following rooms and features:

- GREAT ROOM:** 17-6 x 20-7, located at the top center.
- MASTER BEDROOM:** 16-7 x 15-9, located at the top right, featuring a fireplace and a large closet.
- KITCHEN:** 13-7 x 15-0, located in the middle left, featuring a central island, a sink, and a stove.
- DINETTE:** 12-11 x 10-5, located at the top left, adjacent to the Great Room.
- DEN:** 12-2 x 13-5, located at the bottom left, featuring a fireplace.
- FOYER:** Located in the center, containing a staircase and a coat closet.
- PORCH:** Located at the bottom left, outside the Den.
- BATHS:** Includes a Master Bath (6-7 x 7-6) and a full Bath (5-0 x 7-6).
- W.C. (Water Closet):** Located near the Mud Room.
- MUD ROOM:** Located in the center right, featuring a closet.
- 3 CAR GARAGE:** 22-3 x 34-6, located at the bottom right.
- Other Features:** The plan also shows a Pantry, a Staircase, and various closets throughout the house.

Floor -
9 square feet

Optional Finished
Lower Level -
928 square feet



WESTRIDGEBuilders.com
— DESIGNERS — BUILDERS — DEVELOPERS — INC.

262-547-0326
N8 W22520 - L, Johnson Drive, Waukesha, WI 53186