



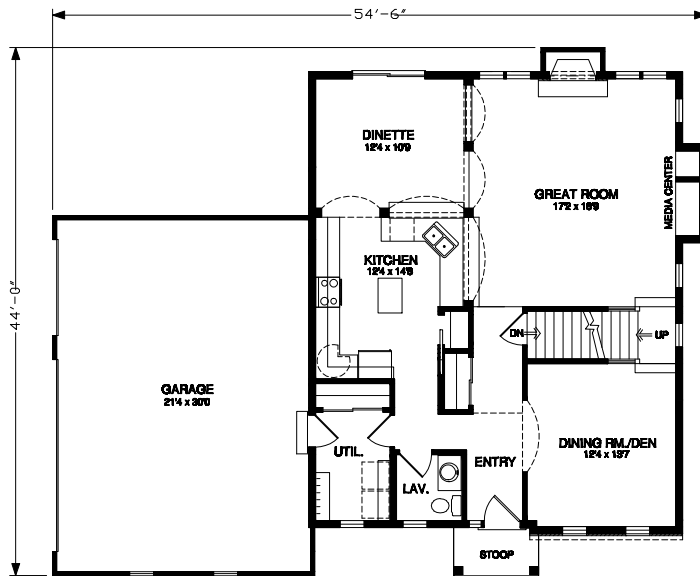
The Ridgewood Amber's floorplan makes great use of every square foot of the home. An open great-room has a built-in media center and fireplace so the whole family can enjoy time together. Upstairs you'll find a large master suite and 2 other bedrooms plus a second full bath.

## See a sales associate for pricing and complete inclusions

- GE® microwave & dishwasher (black, white or almond) ★Energy Star
- built-in entertainment center in greatroom
- lighting, carpet, tile & hardware allowance
- Kohler® faucets and whirlpool tub
- Lindsay® Earthwise windows ★Energy Star
- direct vent Lennox® fireplace (per model) ★Energy Star
- orange peel wall texture
- cabinet hardware
- prefinished cabinets in oak, maple, beech, birch, or thermafoil, all with hidden hinges
- 9' 1st floor walls and raised ceilings on 2nd floor
- 6-panel Masonite interior doors
- white painted 2 1/4" casing & 3 1/4" base
- painted walls throughout
- molded marble counters in all baths, laminate counter-tops to remainder of home
- layered composite floors in kitchen, dinette, utility room, foyer & all baths
- wire shelf & pole in closets
- 3 car garage
- Carrier® high efficiency furnace & air conditioner ★Energy Star
- 15-year TUFF-N-DRI® Foundation Waterproofing
- Tyvek® Housewrap with OSB to exterior
- 2x6 16" on center construction
- TJI Silent Floors
- 12-course basement
- garage door openers
- 25-year asphalt shingles by Owens Corning®
- erosion control
- complete cleanup services

Green Built Home Certification is marked in *green*  
Energy Star ratings are marked with ★Energy Star

Westridge's seasoned sales staff will help design, customize and build your home. Customization is FREE and an essential part of designing everything you dream your new home should be. See a sales associate Saturdays and Sundays from 1-4 in the models for more information.



1st Floor - 1,226 square feet

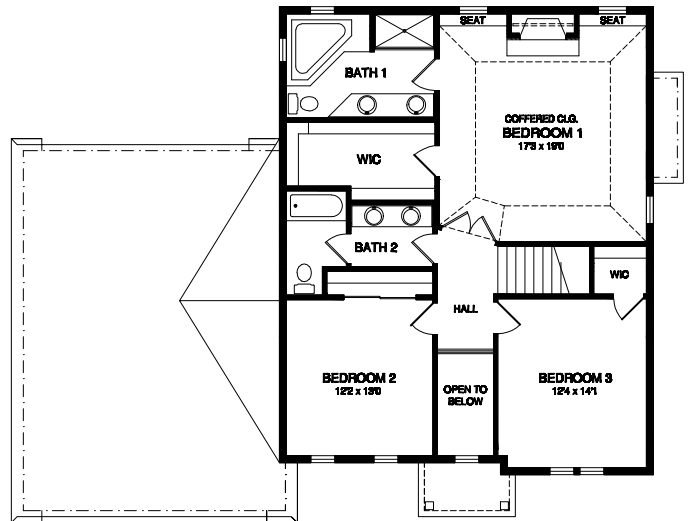
2nd Floor - 1,217 square feet

## Preferred Vendor Highlight

Westridge Builders uses the finest contractors in the area. You can research their products and services under the **PREFERRED VENDORS** menu on [www.westridgebuilders.com](http://www.westridgebuilders.com)

**NEU'S**  
*Hardware Gallery*

**DAKOTA DRYWALL**



Photography, floorplans, inclusions and front elevations are representations of final product and are subject to change. Please refer to bid sheet for exact specifications. Dimensions and square footage are approximate and subject to change. Builder reserves the right to change specifications for purposes of improving product. Copyright Westridge Builders, Inc. All Rights Reserved. It is unlawful for anyone to use or copy these plans without the permission of Westridge Builders, Inc.