



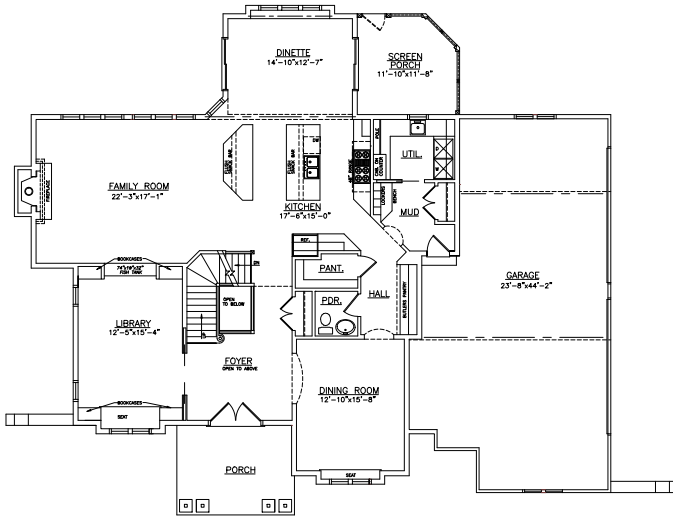
The St. Martin is an upscale version of the popular Geneva series. The family room and dinette are opened to a kitchen, the centerpiece of the home. Four upstairs bedrooms, a library, formal dining room, butler pantry, and loads of details make this an exceptional design.

## See a sales associate for pricing and complete inclusions

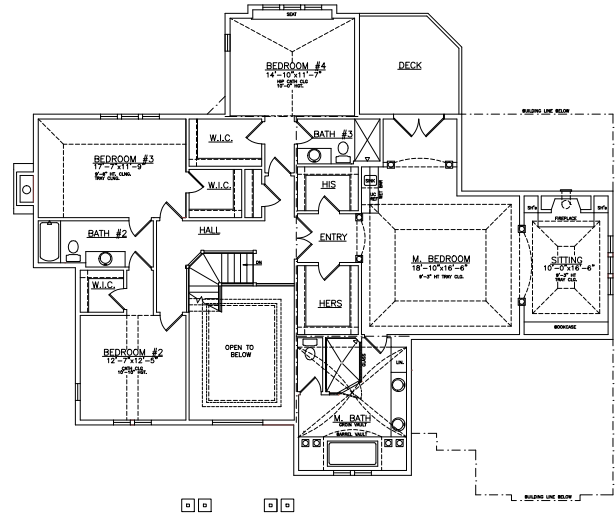
- GE® microwave, dishwasher, stove, refrigerator, hood fan, washer, dryer, under counter wetbar refrigerator at MBR, plus under counter refrigerator, dishwasher, & ice-maker in lower ★Energy Star
- lighting, carpet, hardware, tile upgrade allowance
- Heatilator® wood burning fireplace with gas line/logs
- Heat-n-Glo fireplace with logs at MBR
- see-thru Heat-n-Glo gas fireplace with logs at lower
- total Upgraded Kohler® plumbing fixtures
- Andersen® casement windows ★Energy Star
- California Closets®
- maple custom cabinetry throughout
- built-in cabinets at MBR sitting area and wetbar
- columns at master suite
- private deck at master suite
- 10' 1st fl. walls w/raised ceilings at entire 2nd floor
- built in cabinets with paneled walls at library
- oversized wide woodwork with solid core doors (8' tall doors on 1st floor)
- multiple color painted walls throughout
- granite kitchen countertop, butler pantry, lower level bar, and master bath
- oversized ceramic tile shower at master
- ceramic tile floors in kitchen, dinette, all baths, hall, pantry, foyer & utility
- hand forged iron rails & spindles
- security, sound, central vac, and wiring allowance
- stepped theater (OPTIONAL finished lower level)
- 2 Carrier® high efficiency furnaces and 2 air conditioners ★Energy Star
- all stucco exterior on front elevation with copper roofs
- Hardiplank™ cement board on sides & rear
- 15-year TUFF-N-DRI® Foundation Waterproofing
- Tyvek® Housewrap with OSB to exterior
- 2x6 16" on center construction
- complete cleanup services
- Elk™ 40-year dimensional shingle
- 12-course basement (13 with full exposure)
- 4-car garage with Liftmaster® garage door openers
- composite trim and cement board soffits
- power vented water heater ★Energy Star

Green Built Home Certification is marked in **green**  
Energy Star ratings are marked with ★Energy Star

Westridge's seasoned sales staff will help design, customize and build your home. Customization is FREE and an essential part of designing everything you dream your new home should be. See a sales associate Saturdays and Sundays from 1-4 in the models for more information.



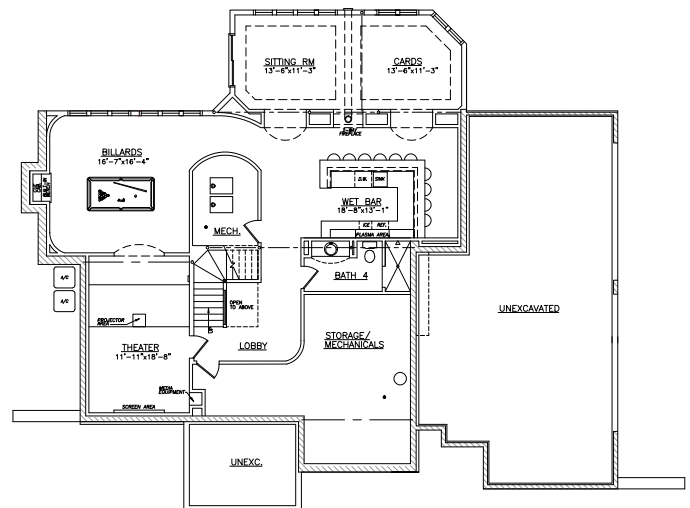
First Floor - 1,978 square feet



Second Floor - 2,156 square feet

## Preferred Vendor Highlight

Westridge Builders uses the finest contractors in the area. You can research their products and services under the **PREFERRED VENDORS** menu on [www.westridgebuilders.com](http://www.westridgebuilders.com)



Optional Finished Lower Level  
Adds 1,660 square feet

Photography, floorplans, inclusions and front elevations are representations of final product and are subject to change. Please refer to bid sheet for exact specifications. Dimensions and square footage are approximate and subject to change. Builder reserves the right to change specifications for purposes of improving product. Copyright Westridge Builders, Inc. All Rights Reserved. It is unlawful for anyone to use or copy these plans without the permission of Westridge Builders, Inc.