



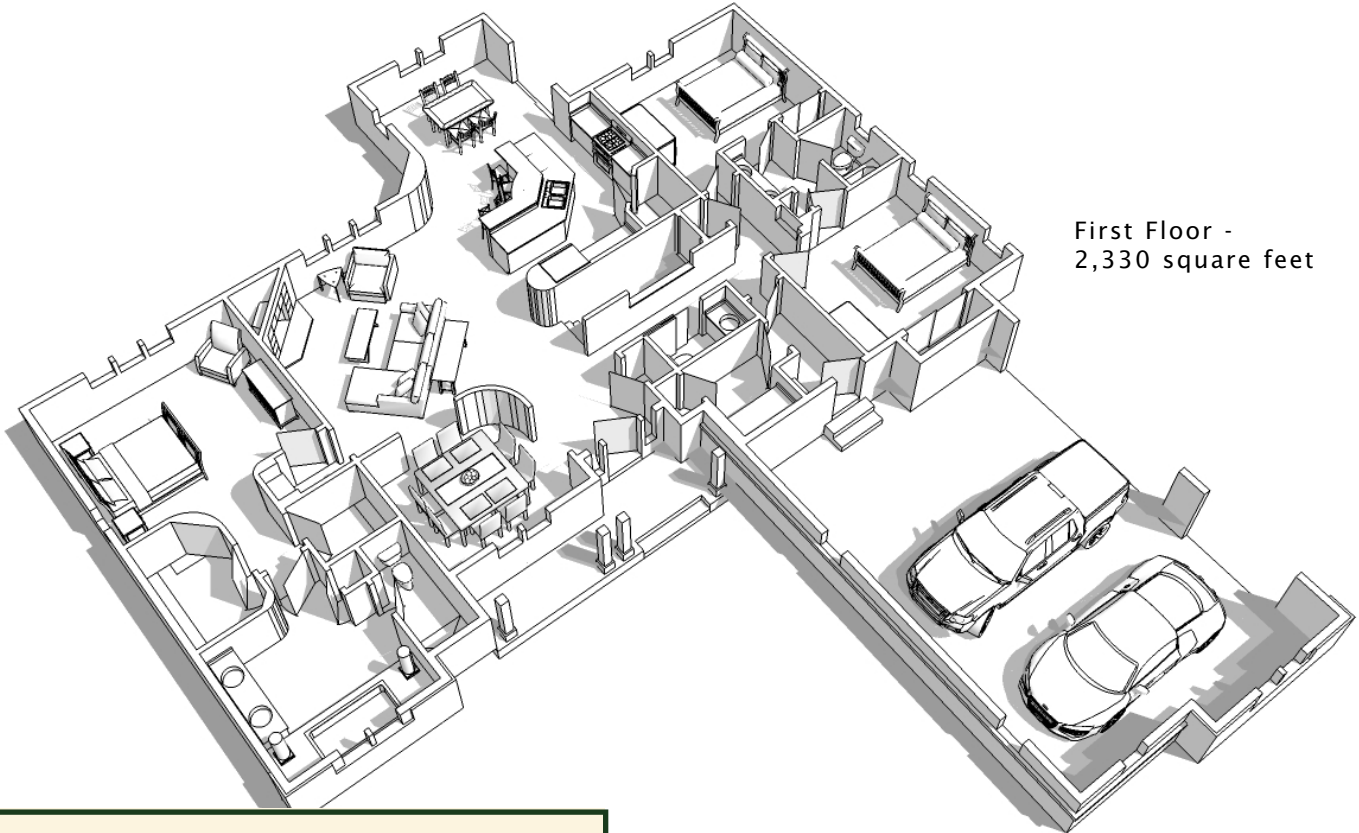
This lovely split ranch design has wonderful details inside and out. The great room has a unique radiated-beamed ceiling to compliment the other special ceilings and niches throughout. This 3-bedroom, 2 full bath home also has a formal dining room and an abundance of flair.

See a sales associate for pricing and complete inclusions

- Upgraded GE® appliance package ★Energy Star
- lighting, carpet, hardware, tile allowance
- Lennox® direct vent fireplace
- specialty ceilings throughout
- open concept
- **granite kitchen and bath countertops**
- Upgraded Kohler® plumbing fixtures
- Andersen® double-hung windows ★Energy Star
- California style closets systems
- painted walls throughout w/multiple colors & coats
- **stained custom cabinetry**
- **wide painted woodwork with 2-panel solid doors**
- ceramic tile floors in baths & utility room
- **American cherry hardwood floors in kitchen, dinette, powder room, hall, mudroom, dining room, greatroom, pantry & foyer**
- iron railings by blacksmith
- custom ceramic tile shower at master bath
- 8-ft walls with raised ceilings
- pillars and barrel vaulted ceiling at master bath tub
- **Hardiplank™ cement board & culture stone on front**
- combination storm and screen
- Carrier® high efficiency furnace & air conditioner ★Energy Star
- Liftmaster® garage door openers
- **15-year TUFF-N-DRI® Foundation Waterproofing** ★Energy Star
- **Tyvek® Housewrap with OSB to exterior** ★Energy Star
- **2x6 16" on center construction**
- **complete cleanup services**
- **Elk™ 30-year dimensional shingle**
- 9' poured foundation basement
- **composite trim and cement board soffits**
- power vented water heater ★Energy Star
- central vac rough-in and security system
- spray foam insulation ★Energy Star

Green Built Home Certification is marked in **green**
Energy Star ratings are marked with ★Energy Star

Westridge's seasoned sales staff will help design, customize and build your home. Customization is FREE and an essential part of designing everything you dream your new home should be. See a sales associate Saturdays and Sundays from 1-4 in the models for more information.

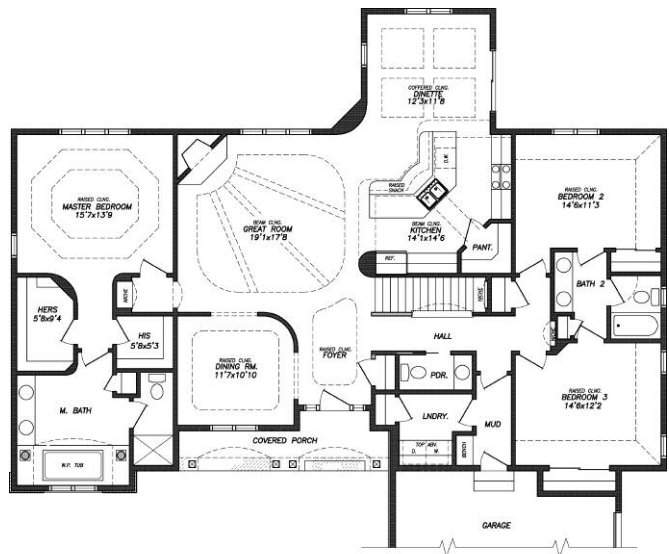


First Floor -
2,330 square feet

Preferred Vendor Highlight

Westridge Builders uses the finest contractors in the area. You can research their products and services under the **PREFERRED VENDORS** menu on www.westridgebuilders.com

Andersen
WINDOWS • DOORS



Photography, floorplans, inclusions and front elevations are representations of final product and are subject to change. Please refer to bid sheet for exact specifications. Dimensions and square footage are approximate and subject to change. Builder reserves the right to change specifications for purposes of improving product. Copyright Westridge Builders, Inc. All Rights Reserved. It is unlawful for anyone to use or copy these plans without the permission of Westridge Builders, Inc.