



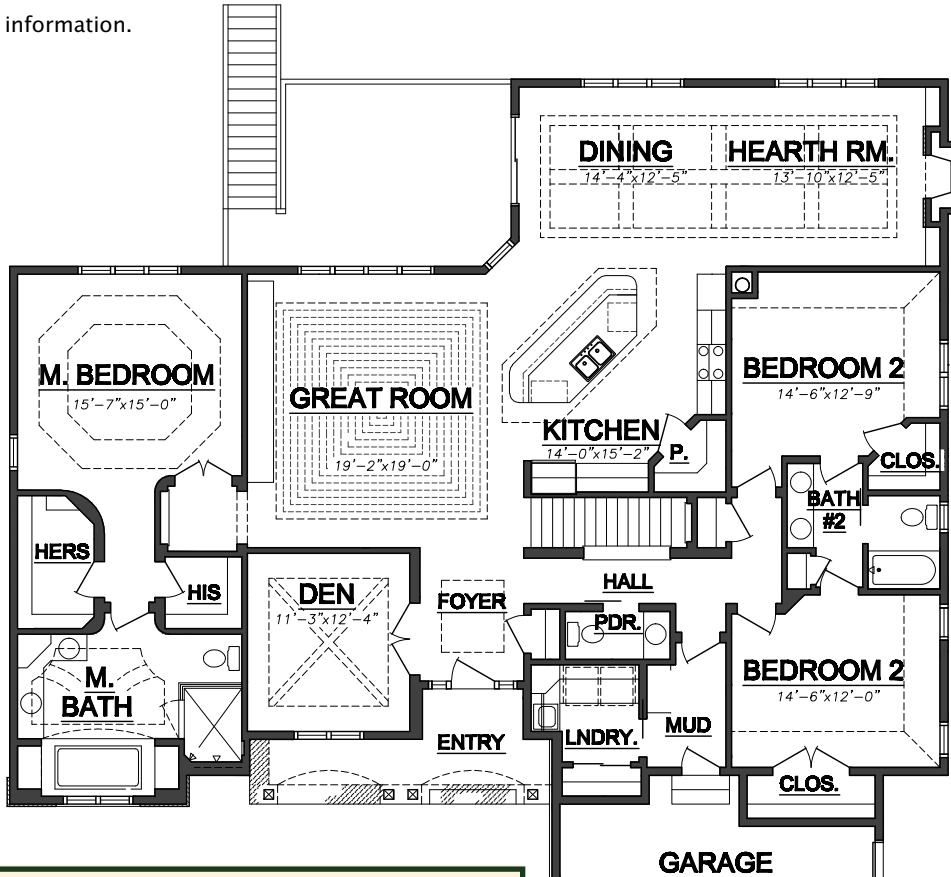
This updated split ranch design has impeccable details inside and out. The great room has a unique wood beaded ceiling to compliment the other wood beamed and custom special ceilings throughout. This 3-bedroom, 2 full bath home also has a flex dining/hearth room to add to its versatility. The finished lower adds another bedroom and full bath, along with a complete bar, rec area and sunken home theater to enjoy.

See a sales associate for pricing and complete inclusions

- Upgraded GE® appliance package ★Energy Star
- lighting, carpet, hardware, tile allowance
- Lennox® direct vent fireplaces ★Energy Star
- specialty ceilings throughout
- specialty tile walled tub surround
- custom oversized tile shower with glass wall
- Total Standard Kohler® plumbing fixtures and plumbing upgrade allowance
- Andersen® double-hung windows/transoms/patio ★Energy Star
- granite countertops throughout
- painted walls throughout w/multiple colors & coats
- stained custom cabinetry
- wide painted and stained woodwork with specialty doors
- ceramic tile floors in baths, mudroom, laundry & bar (with lower level)
- wide plank hardwood floors in kitchen, dining, powder room, hall, foyer, den and great room
- 10-ft walls with raised ceilings
- sunken home theater (with lower level)
- Hardiplank™ cement board siding/stucco & cultured stone on front elevation (Hardiplank to all others)
- Carrier® high efficiency furnace & air conditioner ★Energy Star
- Liftmaster® garage door openers
- 15-year TUFF-N-DRI® Foundation Waterproofing ★Energy Star
- Tyvek® Housewrap with OSB to exterior ★Energy Star
- 2x6 16" on center construction
- complete cleanup services
- Elk™ 40-year dimensional shingle
- 9' poured foundation basement
- composite trim and cement board soffits
- power vented water heater ★Energy Star
- central vac rough-in and security system
- spray foam insulation ★Energy Star

Green Built Home Certification is marked in *green*  
Energy Star ratings are marked with ★Energy Star

Westridge's seasoned sales staff will help design, customize and build your home. Customization is FREE and an essential part of designing everything you dream your new home should be. See a sales associate Saturdays and Sundays from 1-4 in the models for more information.

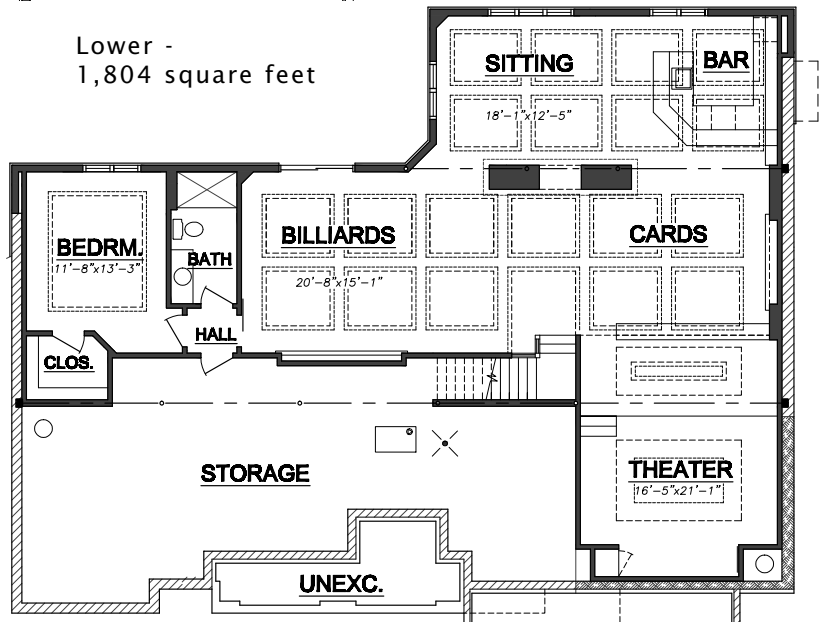


First Floor -  
2,698 square feet  
(shown with optional deck)

**Preferred Vendor Highlight**

Westridge Builders uses the finest contractors in the area. You can research their products and services under the **PREFERRED VENDORS** menu on [www.westridgebuilders.com](http://www.westridgebuilders.com)





Photography, floorplans, inclusions and front elevations are representations of final product and are subject to change. Please refer to bid sheet for exact specifications. Dimensions and square footage are approximate and subject to change. Builder reserves the right to change specifications for purposes of improving product. Copyright Westridge Builders, Inc. All Rights Reserved. It is unlawful for anyone to use or copy these plans without the permission of Westridge Builders, Inc.