



shown with optional stone

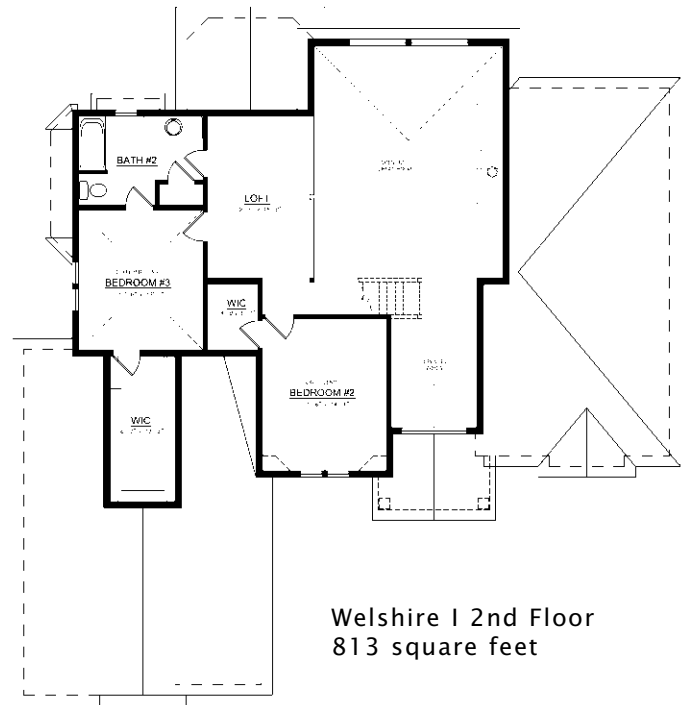
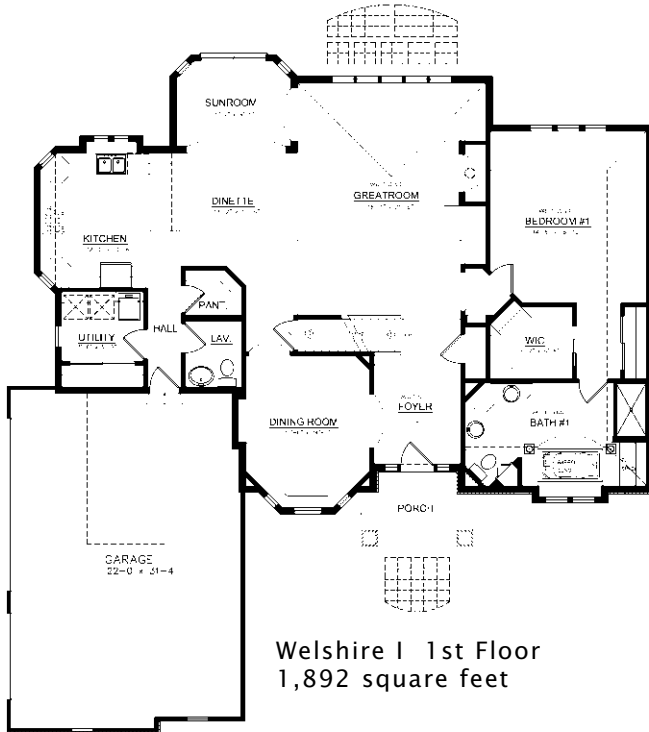
The Welshire I has another great first floor master design that includes a sunroom, formal dining room, and gourmet kitchen. Upstairs you will find 3 more bedrooms, a loft area and a full bath.

See a sales associate for pricing and complete inclusions

- GE® microwave & dishwasher (blk, wht. or almond) ★Energy Star
- lighting, carpet, hardware, tile allowance
- granite kitchen countertop
- Heatilator® wood burning fireplace
- Total Standard Kohler® plumbing fixtures and plumbing upgrade allowance
- Andersen® casement windows ★Energy Star
- stained maple or oak custom cabinetry in kitchen incl. selected fronts with glass doors, and raised panels
- wood spindles from 1st to 2nd floor
- pillars with arched ceiling in master bath
- raised ceilings at master suite, foyer, BR #2, BR #3, loft, and greatroom
- built in cabinets at great room
- 6-panel pine doors
- stained 3 1/4" oak casing, 4 3/4" oak base
- painted walls throughout w/multiple colors & coats
- ceramic tile counters & floors in baths & utility room
- hardwood floors in kitchen, dinette, powder room, hall, pantry, sunroom, foyer, & utility
- hardwood border in dining room
- wood shelf & pole in closets
- combination storm and screen to front door
- Carrier® high efficiency furnace & air conditioner ★Energy Star
- Liftmaster® garage door openers
- real brick and Hardiplank™ cement board exterior
- 15-year TUFF-N-DRI® Foundation Waterproofing ★Energy Star
- Tyvek® Housewrap with OSB to exterior ★Energy Star
- 2x6 16" on center construction
- complete cleanup services
- Elk™ 30-year dimensional shingle
- 12-course basement (13 with full exposure)
- composite trim and cement board soffits
- power vented water heater ★Energy Star

Green Built Home Certification is marked in *green*
Energy Star ratings are marked with ★Energy Star

Westridge's seasoned sales staff will help design, customize and build your home. Customization is FREE and an essential part of designing everything you dream your new home should be. See a sales associate Saturdays and Sundays from 1-4 in the models for more information.

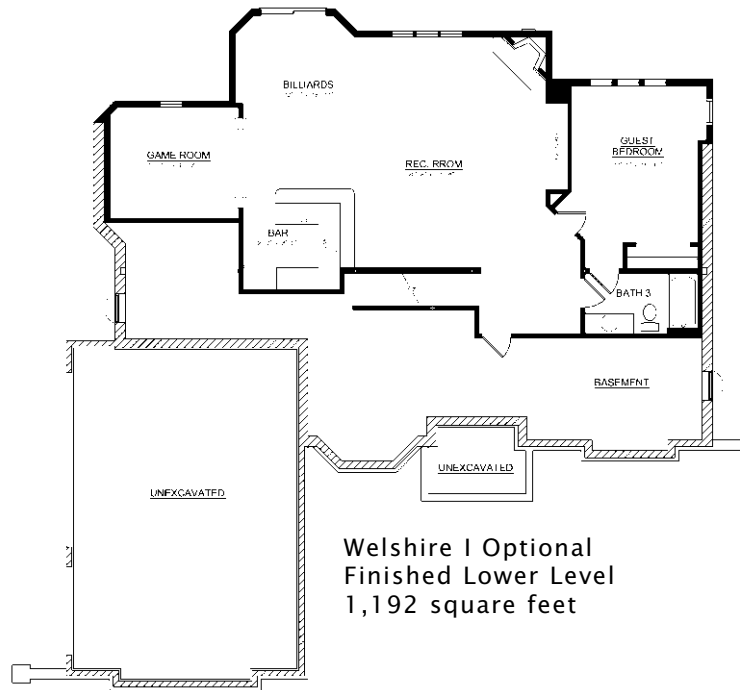


Preferred Vendor Highlight

Westridge Builders uses the finest contractors in the area. You can research their products and services under the **PREFERRED VENDORS** menu on www.westridgebuilders.com

CALIFORNIA CLOSETS®

QuietRock®
HIGHER PERFORMANCE, HIGHER RELIABILITY,
LOWER COST SOUNDPROOFING SOLUTIONS.



Photography, floorplans, inclusions and front elevations are representations of final product and are subject to change. Please refer to bid sheet for exact specifications. Dimensions and square footage are approximate and subject to change. Builder reserves the right to change specifications for purposes of improving product. Copyright Westridge Builders, Inc. All Rights Reserved. It is unlawful for anyone to use or copy these plans without the permission of Westridge Builders, Inc.