



The Westmoor II offers over 2,200 feet in this split ranch design. Coffered ceilings in the kitchen and master bedroom are a couple of the special touches you'll find in this design. The cathedral ceiling in the greatroom gives a stately impression upon entering.

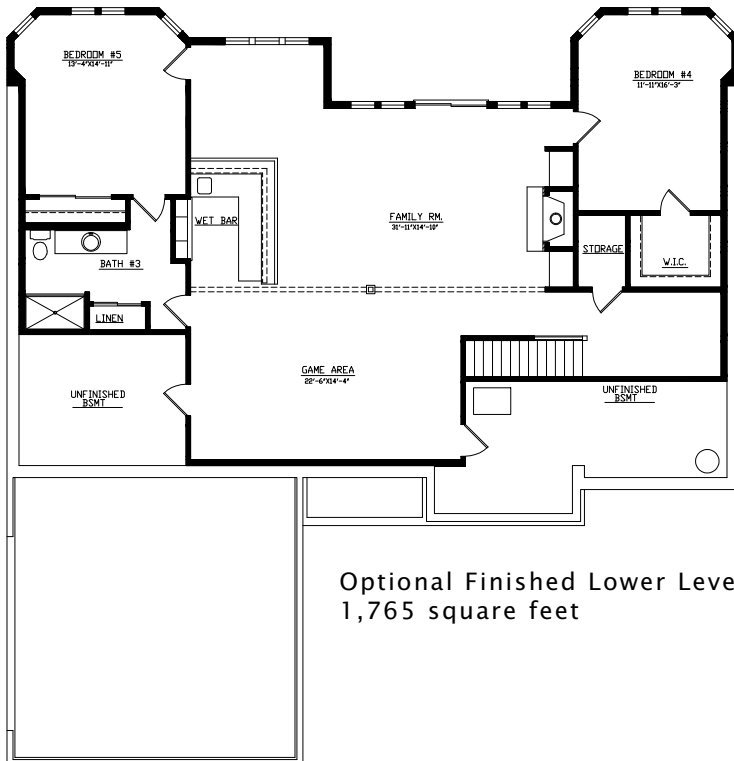
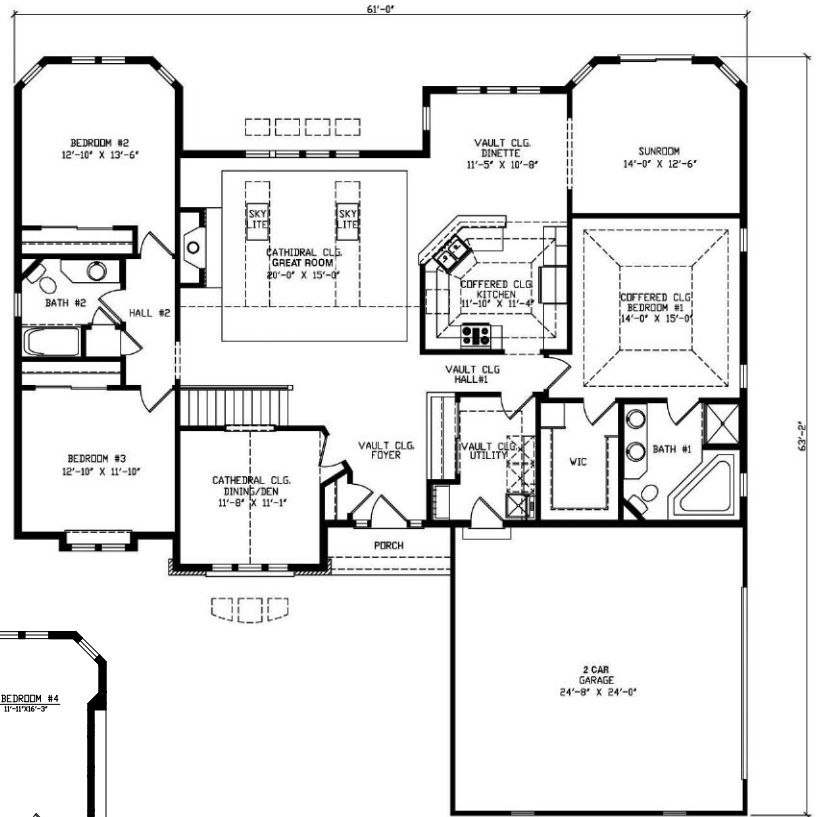
See a sales associate for pricing and complete inclusions

- GE® microwave & dishwasher (blk, wht. or almond) ★Energy Star
- lighting, carpet, hardware, tile allowance
- Heatilator® wood burning fireplace w/ tile surround
- Total Standard Kohler® plumbing fixtures and plumbing upgrade allowance
- granite kitchen countertop
- raised ceilings at great room, kitchen, dinette, dining room, foyer, utility room, and master bedroom
- stained maple or oak custom cabinetry in kitchen
- Andersen® casement windows ★Energy Star
- skylights in great room
- wood spindles at first floor
- lower level fireplace with built in cabinets
- 6-panel pine doors
- stained 3 1/4" oak casing, 4 3/4" oak base
- painted walls throughout w/multiple colors & coats
- ceramic tile counters & floors in baths, utility room
- hardwood floors in kitchen, dinette, powder rm, great rm border, hall, dining room, pantry, sunroom & foyer
- brazilian cherry border in dining room
- wood shelf & pole in closets
- combination storm & screen to front
- Hardiplank™ cement board exterior & brick on front
- Liftmaster® garage door openers
- 15-year TUFF-N-DRI® Foundation Waterproofing
- Tyvek® Housewrap with OSB to exterior
- 2x6 16" on center construction
- complete cleanup services
- Elk™ 30-year dimensional shingle
- 12-course basement (13 with full exposure)
- composite trim and cement board soffits
- power vented water heater ★Energy Star

Green Built Home Certification is marked in *green*
Energy Star ratings are marked with ★Energy Star

Westridge's seasoned sales staff will help design, customize and build your home. Customization is FREE and an essential part of designing everything you dream your new home should be. See a sales associate Saturdays and Sundays from 1-4 in the models for more information.

Main level -
2,257 square feet



Optional Finished Lower Level -
1,765 square feet

Preferred Vendor Highlight

Westridge Builders uses the finest contractors in the area. You can research their products and services under the **PREFERRED VENDORS** menu on www.westridgebuilders.com

HALQUIST
STONE

Photography, floorplans, inclusions and front elevations are representations of final product and are subject to change. Please refer to bid sheet for exact specifications. Dimensions and square footage are approximate and subject to change. Builder reserves the right to change specifications for purposes of improving product. Copyright Westridge Builders, Inc. All Rights Reserved. It is unlawful for anyone to use or copy these plans without the permission of Westridge Builders, Inc.