

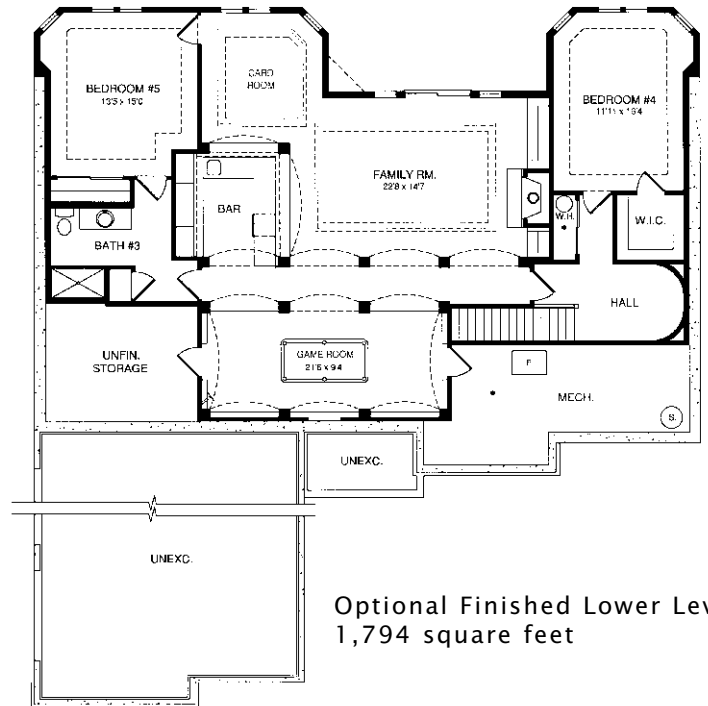
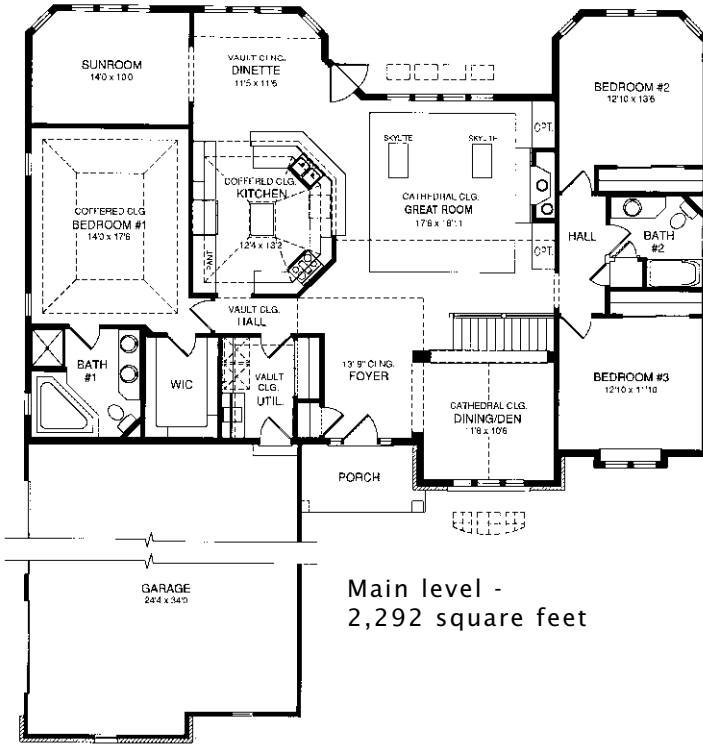
The Westmoor IV is a ranch design that is as luxurious as it is practical. A formal dining room and beautiful master suite add luxury while an open kitchen and plenty of storage add day-to-day functionality. An optional finished lower level can make this home an entertaining destination for family and friends!

See a sales associate for pricing and complete inclusions

- GE® microwave & dishwasher (blk, wht. or almond) ★Energy Star
- lighting, carpet, hardware, tile allowance
- Heatilator® wood burning fireplace w/ tile surround
- Total Standard Kohler® plumbing fixtures and plumbing upgrade allowance
- granite kitchen countertop
- raised ceilings at great room, kitchen, dinette, dining room, foyer, utility room, and master bedroom
- stained maple or oak custom cabinetry in kitchen
- Andersen® casement windows ★Energy Star
- skylights in great room
- lower level fireplace with built-in cabinets
- 6-panel pine doors
- stained 3 1/4" oak casing, 4 3/4" oak base
- painted walls throughout w/multiple colors & coats
- ceramic tile counters & floors in baths, utility room, and sunroom
- hardwood floors in kitchen, dinette, powder rm, great rm border, hall, dining room (border only), pantry, & foyer
- Brazilian cherry border in dining room
- iron spindles at first floor
- wood shelf & pole in closets
- Liftmaster® garage door openers
- combination storm and screen at front & rear
- Hardiplank™ cement board exterior & brick on front
- 15-year TUFF-N-DRI® Foundation Waterproofing ★Energy Star
- Tyvek® Housewrap with OSB to exterior ★Energy Star
- 2x6 16" on center construction
- complete cleanup services
- Elk™ 30-year dimensional shingle
- 12-course basement (13 with full exposure)
- composite trim and cement board soffits
- power vented water heater ★Energy Star


Green Built Home Certification is marked in *green*  
Energy Star ratings are marked with ★Energy Star

Westridge's seasoned sales staff will help design, customize and build your home. Customization is FREE and an essential part of designing everything you dream your new home should be. See a sales associate Saturdays and Sundays from 1-4 in the models for more information.



**Preferred Vendor Highlight**

Westridge Builders uses the finest contractors in the area. You can research their products and services under the **PREFERRED VENDORS** menu on [www.westridgebuilders.com](http://www.westridgebuilders.com)

Photography, floorplans, inclusions and front elevations are representations of final product and are subject to change. Please refer to bid sheet for exact specifications. Dimensions and square footage are approximate and subject to change. Builder reserves the right to change specifications for purposes of improving product. Copyright Westridge Builders, Inc. All Rights Reserved. It is unlawful for anyone to use or copy these plans without the permission of Westridge Builders, Inc.