



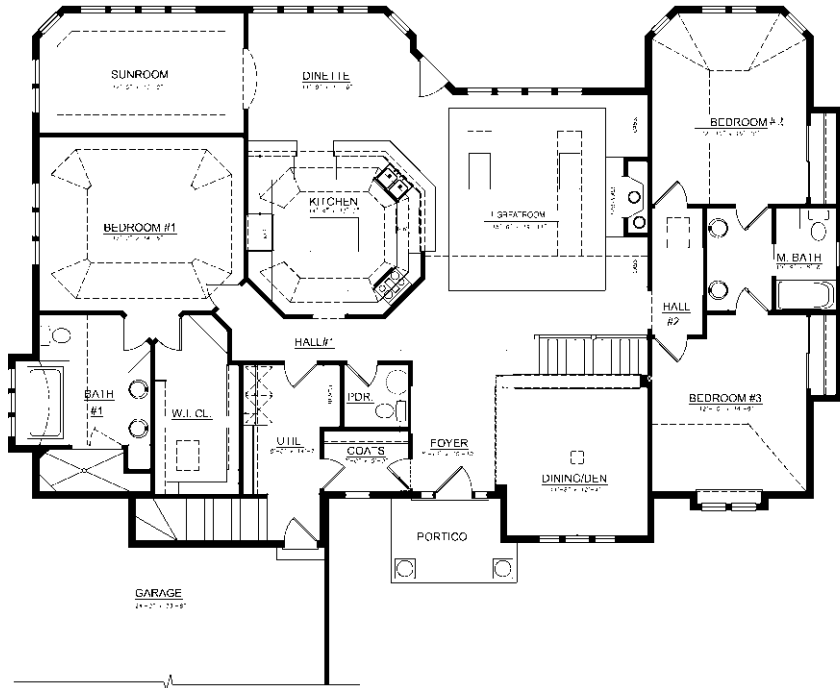
The Westmoor V ranch is one of Westridge's most popular designs. The trademark feature of this design is the double skylights in the greatroom. Specialty ceilings and decorative niches give the Westmoor V a flair that Westridge has become known for.

See a sales associate for pricing and complete inclusions

- GE® microwave, dishwasher ★Energy Star
- lighting, carpet, hardware, tile allowance
- Heatilator® wood burning fireplace w/gas line
- Total upgraded Kohler® plumbing
- Andersen® casement windows ★Energy Star
- raised ceilings throughout first floor
- built in cabinets at living room, lower level fireplace
- special lighted ceiling at lower level card room and lower level family room
- oversized ceramic tile shower at master bath
- granite kitchen countertop
- slate inlay in great room & foyer
- custom iron railings
- lighting & tile upgrades
- special wood/mirror panels at gym with Sport Court® floor
- skylights at living room
- wide stained & painted woodwork w/solid core doors
- multiple colored painted walls throughout
- marble countertop to bath #1
- ceramic tile counters & floors in bath #2 & #3, utility room, sunroom, lower level bar, and half walls
- hardwood floors in kitchen, dinette, bath #1, hall, mudroom, foyer, lower level gameroom, lower level card room, and bonus room
- California Closets System® throughout
- stucco front exterior with special buildups
- Hardiplank™ cement board siding to sides and rear
- Liftmaster® garage door openers
- 15-year TUFF-N-DRI® Foundation Waterproofing ★Energy Star
- Tyvek® Housewrap with OSB to exterior ★Energy Star
- 2x6 16" on center construction
- complete cleanup services
- Elk™ 40-year dimensional shingle
- 12-course basement (13 with full exposure)
- composite trim and cement board soffits

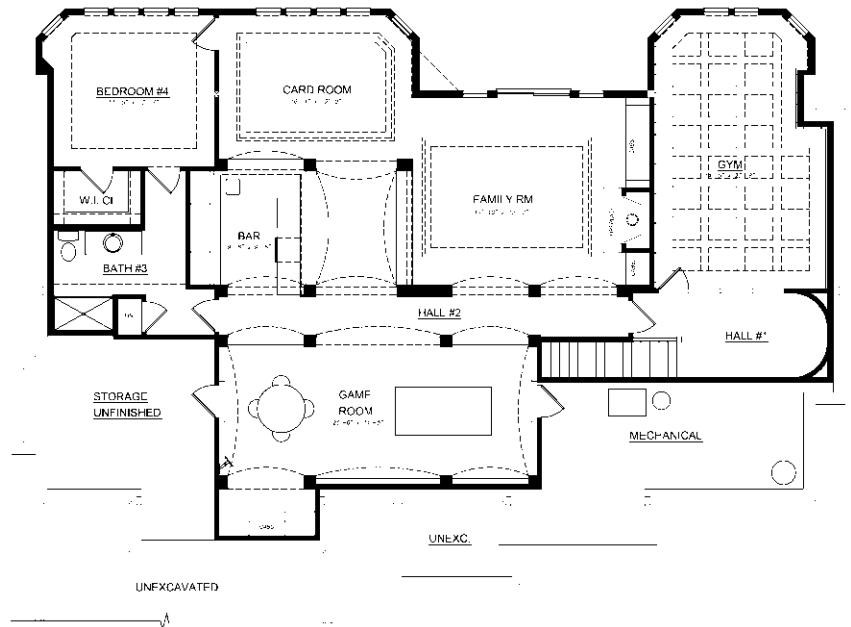
Green Built Home Certification is marked in *green*
Energy Star ratings are marked with ★Energy Star

Westridge's seasoned sales staff will help design, customize and build your home. Customization is FREE and an essential part of designing everything you dream your new home should be. See a sales associate Saturdays and Sundays from 1-4 in the models for more information.



Main level - 3,205 square feet (includes bonus room)

Optional Finished Lower Level - 2,112 square feet



Preferred Vendor Highlight

Westridge Builders uses the finest contractors in the area. You can research their products and services under the **PREFERRED VENDORS** menu on www.westridgebuilders.com



Photography, floorplans, inclusions and front elevations are representations of final product and are subject to change. Please refer to bid sheet for exact specifications. Dimensions and square footage are approximate and subject to change. Builder reserves the right to change specifications for purposes of improving product. Copyright Westridge Builders, Inc. All Rights Reserved. It is unlawful for anyone to use or copy these plans without the permission of Westridge Builders, Inc.