



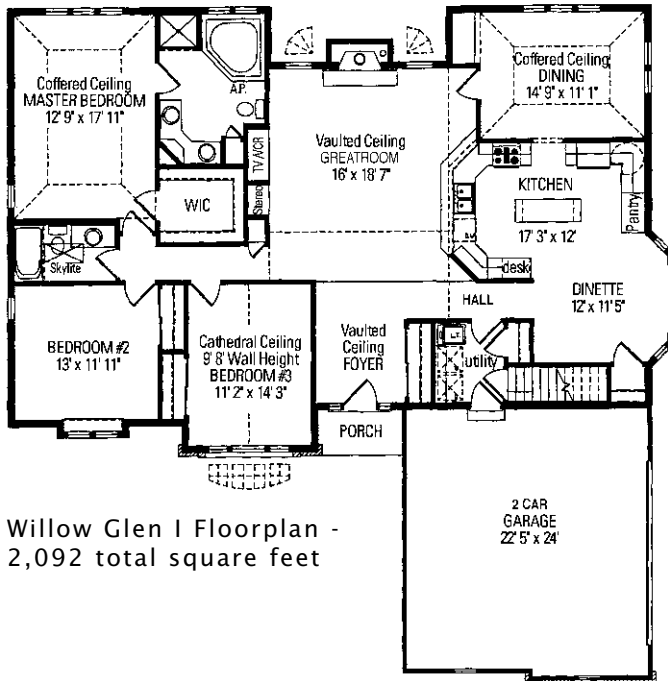
The Willow Glen is a contemporary ranch design with special ceilings throughout the home. The woodburning fireplace will keep the great room warm in the winter and the gourmet kitchen/dinette area is an entertainer's dream.

See a sales associate for pricing and complete inclusions

- GE® microwave & dishwasher (blk, wht. or almond) ★ *Energy Star*
- lighting, carpet, hardware, tile allowance
- combination storm and screen to front
- Heatilator® woodburning fireplace
- Total Standard Kohler® plumbing fixtures and plumbing upgrade allowance
- Andersen® casement windows ★ *Energy Star*
- raised ceilings in selected rooms
- stained maple or oak custom cabinetry in kitchen
- painted walls throughout w/multiple colors & coats
- 6-panel pine doors
- stained 3 1/4" oak casing, 4 3/4" oak base
- granite kitchen countertop
- ceramic tile counters & floors in baths & utility room
- hardwood floors in kitchen, dinette, hall, foyer & dining room
- wood shelf & pole in closets
- Hardiplank™ cement board & real brick exterior
- Liftmaster® garage door openers
- 15-year TUFF-N-DRI® Foundation Waterproofing ★ *Energy Star*
- Tyvek® Housewrap with OSB to exterior ★ *Energy Star*
- 2x6 16" on center construction
- complete cleanup services
- Elk™ 30-year dimensional shingle
- 12-course basement (13 with full exposure)
- composite trim and cement board soffits
- power vented water heater ★ *Energy Star*

Green Built Home Certification is marked in *green*
Energy Star ratings are marked with ★ *Energy Star*

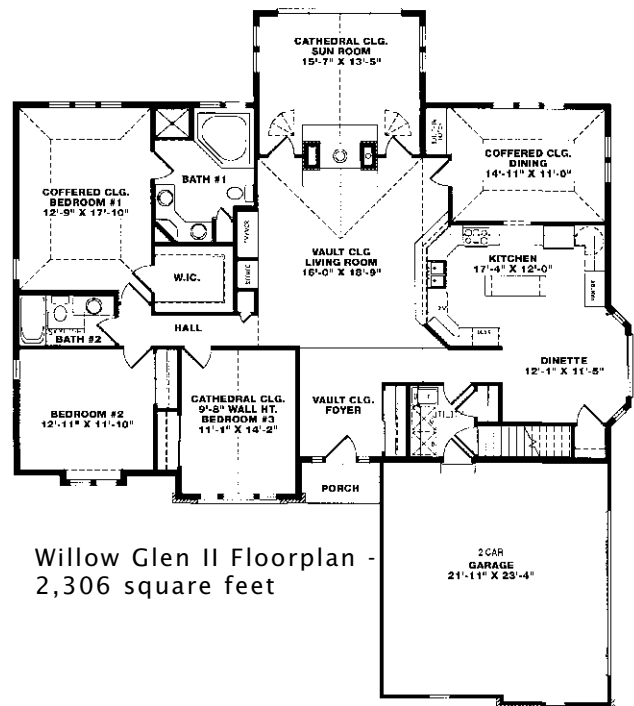
Westridge's seasoned sales staff will help design, customize and build your home. Customization is FREE and an essential part of designing everything you dream your new home should be. See a sales associate Saturdays and Sundays from 1-4 in the models for more information.



Willow Glen I Floorplan -
2,092 total square feet

Preferred Vendor Highlight

Westridge Builders uses the finest contractors in the area. You can research their products and services under the **PREFERRED VENDORS** menu on www.westridgebuilders.com



Willow Glen II Floorplan -
2,306 square feet

Photography, floorplans, inclusions and front elevations are representations of final product and are subject to change. Please refer to bid sheet for exact specifications. Dimensions and square footage are approximate and subject to change. Builder reserves the right to change specifications for purposes of improving product. Copyright Westridge Builders, Inc. All Rights Reserved. It is unlawful for anyone to use or copy these plans without the permission of Westridge Builders, Inc.